

2024 Annual Report





JBWS is a private, confidential service that welcomes ALL survivors of dating, domestic, or partner abuse (and their family members) regardless of severity of the abuse, marital status, income, gender identity, sexual orientation, religion, or ethnicity.

Our Mission is the prevention of domestic violence through the protection and empowerment of the victim, the rehabilitation of family members, the advocacy for social reform to prevent partner violence, and the education of the public about domestic violence and its consequences.

Our Vision is to create a community-wide culture that does not tolerate the presence of any form of family or partner violence... a culture that holds people who use abuse accountable for their actions and victims blameless for their victimization... and a culture that works purposefully to foster healthy relationships, teaching all children the importance of mutual respect between partners.

The design services for this annual report were generously donated by Merck & Co.

Board of Directors

Chair:

Rita A. Karachun
Merck & Co., Inc. (Retired)

Treasurer:

Pete Hernandez
Mt. Airy Casino

Vice-Chair:

Valerie Murray
Beacon Trust Company

Secretary:

Kerry Howe
Spotify

Sandra Addo

Merck & Co., Inc.

Patrick Higgins

PricewaterhouseCoopers

Farah N. Ansari

Schenck, Price, Smith &
King, LLP

Steven Kohutic

Ernst & Young LLP

Melissa Bird

Johnson & Johnson

Donna Lyden

Ronita Mathias

Verizon

Noel Briordy

Crum & Forster

Patricia O'Rourke

Tiffany & Co.

Jamie Carpenter

Wyndham Hotels & Resorts

Samantha Rocco

Einhorn, Barbarito, Frost,
& Botwinick

Erica DeMarco

The Siegfried Group

Jeffrey L. Simon

Deloitte, LLC (Retired)

Latoya Edwards

VISA

Juan Trillo

Hudson Insurance Group

Beth Elenwune

KPMG

April Wirtz

Accenture Strategy

Lindsay Friedman

Barclays

Christine Zeikel

Deloitte, LLC

Danielle Graddick

Clinical Psychologist

Diane Williams

JBWS President & CEO

Advisory Council

Britt Byers

Dawn Gabriel

James Gerace

Mirian Graddick-Weir

Helen Hallberg

Kelley Kurtzman

Patricia A. Lee

Jamie Molchan

Judy O'Hagan

Laurie Peter

Grace Shin

Anthony Slimowicz

Jim Sonneborn

Brooke Wiener

Gretchen Wilcox

Amy Wiwi

Jeff Wolfanger

Board Members as of 12/31/2024

SAFETY

10-11

Crisis Support

12-13

Residential Services

SUPPORT

14-16

Counseling Services

17

Legal Services

Table of Contents

6-7

Reflecting on 2024

8-9

Breaking the Silence
in Our Community





SOLUTIONS

18-19

Dating Abuse Prevention Program

20-23

Abuse Intervention Program

24-25

Education

26-27

Thanking Our Community

28-29

Unsilenced

30-31

Legacy Society

32-33

Financials

34-48

Donors

Reflecting ON 2024

Domestic violence grows in silence, and this year JBWS focused on breaking that silence in all elements of our work. We focused on increasing our community education initiatives, our staff, volunteers, and survivors advocated for domestic violence funding in front of the New Jersey Legislature, and we continued to dismantle the cycle of violence through our extensive programming.

In this annual report, you will learn how JBWS offers safety, support, and solutions to those impacted by domestic violence. We explain the significance of each service JBWS offers such as our Crisis Response Team (Page 10), counseling services (Page 14), and abuse intervention program (Page 20) and how they directly help to end the cycle of violence.

In 2024, we took our goal of educating the community to another level by launching a podcast, *Unsilenced: Real Conversations About Abuse* (Page 28). Our podcast explored taboo topics relating to abuse through raw, unfiltered conversations. Through it, we were able to break the silence surrounding domestic violence beyond our immediate community.

Thank you to everyone who supported JBWS in 2024! We cannot do this work without your support. Ending the stigma associated with abuse takes all of us. Thank you for helping us save and change lives.

Recognitions

JBWS was once again recognized by Charity Navigator and GuideStar, two organizations that evaluate nonprofit agencies. JBWS received the highest (4-star) rating for ten consecutive years by Charity Navigator. Similarly, JBWS is rated at the highest level (platinum) by GuideStar.





Breaking ^{THE} Silence ^{IN} Our Community

Why does talking about domestic violence make people uncomfortable?

Is it hard to consider that our loved ones might be harming another person? Or maybe we don't know how to talk to someone who is experiencing abuse. Regardless of the reason, not talking about abuse only ensures that the problem persists.

Throughout 2024, JBWS made a concerted effort to normalize conversations about abuse because domestic violence only grows in silence. Two of these efforts revolved around advocacy and community education.



Advocacy

JBWS staff, volunteers, and board members have testified before the New Jersey Legislature about the importance of maintaining domestic violence funding. They shared personal testimonies about the necessity for domestic violence services. If you'd like to help JBWS break the silence through political advocacy visit jbws.org/advocacy



Community Education

Since the first step in ending domestic violence is educating people about abuse, JBWS increased its efforts to have practical information on our website. In 2024, JBWS added numerous pages to [JBWS.org/resources](https://jbws.org/resources) to help people identify if their relationship is unhealthy and how to help someone impacted by abuse. To ensure all people have access to our services, we also translated information about domestic violence into Arabic, Hindi, Mandarin, and Spanish.



Tips on Breaking the Silence

- ▶ **Schedule social media posts** about domestic violence throughout the year
- ▶ Put information about domestic violence on **your company's intranet**
- ▶ Invite JBWS to a **lunch and learn** to speak about domestic violence
- ▶ **Put flyers for services** in the bathroom of your offices
- ▶ **Include novels** that feature domestic violence in your book club
- ▶ **Don't shy away** from talking about domestic violence



Do you want to help break the silence?

Do you want to help end the silence surrounding domestic violence but aren't sure where to start? JBWS has downloadable flyers, social media posts, toolkits, and more. Visit jbws.org/community-resources or scan the QR code ▶



SAFETY

Crisis Support

24-Hour Helpline

Thousands of calls are made to JBWS' 24-Hour Helpline each year.

Most callers are anxious when they dial JBWS' 24-Hour Helpline for the first time. They may be trying to determine if abuse is occurring in their relationship or seeking advice about how to support their friend. The helpline is often the first step toward a victim's journey to safety.

Abusive relationships can be isolating so the helpline is a tangible reminder that a victim of abuse is never alone. Someone who understands domestic violence is always available.

"I called the helpline one morning and spoke to a kind woman. After years of abuse, I could finally tell someone. I continued to call her for a month on my lunch breaks. She helped me get up the nerve to get a restraining order and come to JBWS' Emergency Safe House. When I did, my kids and I ran with as little as possible."

Who can call the helpline?

- ▶ People experiencing abuse
- ▶ People concerned about their friends/family
- ▶ Members of the community
- ▶ Concerned professionals



Crisis Response Team

1,145 interventions were conducted by the Crisis Response Team in 2024

In the worst moment of a victim's life, members of JBWS' Crisis Response Team (CRT) are there. They meet victims in police stations and hospitals to offer comfort, support, and critical access to resources. At three in the morning, before sitting down for a holiday meal, or on a Friday night, CRTs respond to people in crisis. They are committed to volunteering on a victim's time.

"We are just trying to plant the seed that life without abuse is possible."

Why Won't Victims of Abuse Just Leave?

Leaving an abusive relationship isn't just about walking out the door. It's about untangling yourself from a life you've built, one that may involve shared finances, children, and community ties.

"Fill one bag," says Robin Hughes, Manager of JBWS' Crisis Response Team. "That's what you can take with you when you leave your home. One bag. What do you take? Your child's artwork? Your clothes? What is important to your heart that you can't fit in that bag? And I'm asking you to leave it behind, I'm asking you to walk away from all of that so you can be safe."

Leaving can be difficult and dangerous. That is why JBWS is here to support victims, wherever they may be on their path to safety.



24-Hour Helpline:
1.877.782.2873



Scan the QR code to learn more about why it's not easy to leave abusive relationships ▶



SAFETY

Residential Services

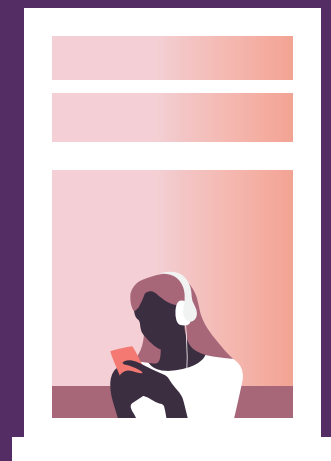
Why is Housing Critical for Victims of Domestic Violence?

“Where will I live if I leave?” This is a question that many victims of domestic violence must ask themselves. The lack of housing options is one of the biggest barriers that victims face when considering leaving an abusive relationship.

Because of the dynamics of power and control, many victims are intentionally isolated from their community of support. By alienating a person from their friends and family, they have nowhere to stay if they leave. Leaving is further complicated by a victim’s finances being controlled by their partner. If their partner ruins their credit score, controls their bank account, and monitors their spending, then they don’t have the financial means to leave.

Housing services are critical to supporting victims of abuse because it gives them a place to rebuild their lives. Through these services, victims can overcome the isolation and financial control imposed by their partner.

JBWS offers several housing programs to support victims’ needs on their journey to safety.



Safe House:

189 adults and children found protection for a total of 13,111 days at Arbour House, JBWS’ Emergency Safe House Shelter

Rapid Rehousing:

22 families established housing in the community and received comprehensive services through the Rapid Rehousing Program

Transitional Living:

59 adults and children stayed for a total of 11,576 days at the Carol G. Simon Transitional Living Resource Center in the Transitional Living Program

Community Housing:

135 families received emergency aid through the Community Housing Assistance program

“I couldn’t have done this without the support of JBWS’ Rapid Rehousing program, the services I received, and the case management that was offered to me.”

Building a Safer Life

Kay was determined to build a new, safe life for her child when she arrived at JBWS’ Emergency Safe House Shelter. While she had the desire to create this new life, she didn’t have the resources to make it a reality. Her partner was in control of her finances, he disrupted her education, and he made it nearly impossible to function without him.

When Kay entered Safe House, she had already secured a full-time job but needed housing support to begin rebuilding her life. Within a few short weeks, Kay enrolled in JBWS’ Rapid Re-Housing program. She utilized JBWS’ extensive services and received assistance filing for child support and improving her credit score. Because of this support, Kay was able to earn her degree and move into a safe, affordable housing unit that fit the needs of her family.

One of JBWS’ founders Candy O’Donel-Browne tours JBWS’ shelter with her two sons several decades after its founding ►



SUPPORT

Counseling Services

Counseling Reduces Isolation and Increases Support

More than 300 children
in JBWS' residential and community counseling programs received support in 2024

Constant fear. That is the emotion that domestic violence creates for children. Their home is not safe, and it has tangible impacts on their development. Children who witness domestic violence show more anxiety, lower self-esteem, depression, anger, and temperament problems than children who haven't witnessed abuse.

JBWS' Trauma Focused Cognitive Behavioral Therapy helps children and adolescents process the trauma they experienced to mitigate long term effects of abuse.

Therapy Helped This Teen Feel Safe

Before therapy, I was hurt in so many ways, but I thought I deserved everything that happened. I learned that I didn't deserve it though. I learned that some people who you really love are the people who end up hurting you the most, so you have to learn to let go.

I wasn't safe before therapy. I didn't recognize myself anymore. I needed to get help – to have someone who would sit and listen to how I felt. I needed someone I could trust. My therapist at JBWS taught me how to control my feelings and how to cope. For the future, I see myself being a very proud and strong girl, living her life and achieving her goals.

I want my future self to be proud of who she became. I want her to be able to look back and tell my younger self that she's proud of her for not giving up and allowing me to become who I will be in the future.


Learn more about the impact of abuse on children by scanning the QR code ►



Adult Counseling Services

296 survivors
received counseling through
the adult counseling services

Victims of domestic violence are harmed by the person who claims to love them the most. This can ruin their sense of self, worsen existing mental health conditions, and make a person lose all sense of control over their life. Counseling services play a crucial role in helping victims understand the abuse they experienced, process their trauma, and begin to heal.



"I was scared to talk about the dating abuse I experienced, but counseling put me at ease. It showed me that talking is good and healthy. I realize that if I didn't attend counseling, I would be a very different person today."

SUPPORT

Counseling Services

“There’s No Way Out” The Link Between Domestic Violence and Suicide

Domestic violence is a risk factor for suicide. Because victims of abuse are often isolated from their social circles, family, and friends they may believe that suicide is the only way to escape the abuse.

However, that is not true, and help is always available for people experiencing abuse ►



Suicide and Crisis Lifeline
Dial 988

JBWS’ 24-Hour Helpline
Dial 1.877.782.2873

*JBWS’ helpline is not intended for mental health emergencies. Please call 988 for suicide and crisis support

How to Talk About Suicide:

- ▶ Talking about suicide could save someone’s life.
- ▶ Directly ask if they are having suicidal thoughts
- ▶ Talking about suicide or self-harm is not going to put the thought into someone’s head that wasn’t already there.
- ▶ Show the person that you care about them.
- ▶ Isolation can convince victims of abuse that they are alone, express your care and concern for them.
- ▶ Don’t try and solve or fix all their problems.
- ▶ A lot of life’s problems can’t be solved immediately, just lend an empathetic ear.
- ▶ Seek professional help when necessary

Legal Services

Comprehensive Support

The Morris Family Justice Center

541 adults
received comprehensive
services from multiple
agencies within the Morris
Family Justice Center

It can be overwhelming to try and navigate all the supportive services necessary for victims of domestic violence. To free themselves of abuse, victims may have to visit one agency for counseling, another for legal assistance, and a third for children's services. This forces victims to miss days of work, spend money they may not have on transportation, and retell their painful story of abuse numerous times. The stress of this process can lead many victims to stop seeking support.

The JBWS-led Morris Family Justice Center (MFJC) provides all the services a survivor of domestic violence needs in ONE place. A victim can walk into the MFJC, meet with JBWS staff members, and be connected to the services they require without visiting numerous agencies. It is designed to reduce the stress of seeking services.

The MFJC is able to connect victims to services through a collaboration with partner agencies.

Partners of the Morris Family Justice Center:

- ▶ EDGE NJ
- ▶ Legal Services of Northwest Jersey
- ▶ Morris County Prosecutor's Office
- ▶ Morris County Organization for Hispanic Affairs
- ▶ Morris County Sexual Assault Center
- ▶ Morris County Sheriff's Office



Legal Advocacy Services

1,332 people received critical legal advocacy services

What does filing a restraining order mean? What will happen in court? How do I get a divorce? These are some of the questions that people experiencing domestic violence might face when leaving their partner. Through our legal advocacy services program, victims are guided through the restraining order process, offered support in court, and other critical legal services.

SOLUTIONS

The Dating Abuse Prevention Program

DAPP (Dating Abuse Prevention Program) begins educating students in sixth grade about healthy friendships and how bullies mimic dynamics of power and control. As the students age, this material changes to address sexual abuse, controlling behavior, and how to support a friend experiencing dating abuse.

3 signs of dating abuse in teens ▴



Change in normal behavior

- ▶ Giving up hobbies they once loved or neglecting interests they previously spent a lot of time on. Pay attention if there is a marked difference in lifestyle before and after the relationship began.



Constantly on their phone

- ▶ Young people may use their phone a lot but notice if they seem stressed by it. If they're jumpy, nervous, or checking their phone repeatedly, as if they must be constantly available, that could be a sign that something is off in the relationship.



Withdrawing from friends and family

- ▶ Isolation is frequently used in abusive relationships. If your teen used to spend a lot of time with family and friends but now doesn't, it could be a warning sign.





11,825
teenagers

were educated about
abuse and resources
for assistance through

261
presentations

by JBWS' Dating Abuse
Prevention Program (DAPP)



Students at
DAPP workshop

1 in 3
teenagers

will experience dating abuse before
they reach adulthood. By educating
students at an early age, we can
increase their awareness about
abuse, intervene before abuse
escalates, and offer help for those
causing harm in their relationships.

SOLUTIONS

Abuse Intervention Programs

What is JCNV?

JBWS' Jersey Center for Non-Violence is the ultimate victim service because it stops abuse at its source. While victims may find safety after experiencing abuse, people using abuse will continue to have relationships.

Without intervention, these relationships will just create more victims of abuse.

How it works:


Men, women, and teenagers who have caused harm in their relationships learn alternatives to using abuse by following specifically designed curriculum.

These programs help to:

- ▶ Increase accountability
- ▶ Promote behavior change
- ▶ Teach alternatives to abuse

184
people

received counseling
and supportive services
through the Jersey
Center for Non-Violence.



▲ How to express concern for someone using abuse:

STEP ONE ▶ Become educated

STEP TWO ▼ Show C-O-N-C-E-R-N

Concern

- ▶ Start by saying “I’m concerned about you.” Don’t start by criticizing the person. Provide support for them as a person and address their responsibility for their use of abuse.

Observations

- ▶ Be clear and specific about what you saw and why it made you concerned. Openly and honestly describe the behavior you observed and your reaction.

No one deserves abuse

- ▶ Abusive and controlling behavior is hurtful and has consequences. Reinforce that there is no excuse for hurting another person emotionally, verbally, sexually or physically.

Confidentiality

- ▶ Let the person know that you won’t gossip about their behavior. Explain that you are concerned about them and their family’s safety. Encourage their access to supportive services.

Empathize

- ▶ Don’t judge them. Empathize with the complexity of feelings that one can have in a relationship. Communicate that while feeling stressed, frustrated, or angry is understandable, no one deserves to be abused. Share your knowledge of warning signs of potential abuse.

R U safe?

- ▶ Safety has to be a top concern any time you think there is abuse, especially during a breakup or separation. Help them see why getting help is needed and how it can help them and their family. Let them know that there are confidential resources to help them.

Name the problem

- ▶ They may say there isn’t a problem and nothing needs to change. They may blame their partner, stress, or other life circumstances. Naming the problem as “unhealthy or abusive” can help direct them to appropriate resources.

STEP THREE ▶ Make a referral

SOLUTIONS

Abuse Intervention Programs



ACT ends the cycle of abuse ▲

Jeff's son was angry. His emotions were so intense that he loudly banged his fists on the dinner table, scaring his younger siblings.

When Jeff asked where he learned this behavior his son replied:
"From you, Dad."

Because Jeff had learned the impact of abusive behaviors in JBWS' Abuse Ceases Today (ACT) program, he was able to explain to his son that ways he expressed anger in the past were not okay. Jeff described how these behaviors scared the people around him and were actually forms of intimidation.

Jeff intervened when his son started to mimic the threatening behaviors Jeff used in the past because of the skills and knowledge, he acquired in the ACT program.

▲ The benefit of early and continuous intervention:

More than ten years after completing CHOICES, the program designed for teenagers who have caused harm in their relationship, Dan contacted JCNV again. Now in his late twenties, Dan noticed old patterns of control and abuse beginning to resurface with his partner. Recognizing how trauma was impacting his life, Dan wanted to address it instead of engaging in behaviors that could harm his partner.

He felt safe calling JCNV for support because of his experience with the CHOICES program.



Visit jbws.org/jcnv
to learn more or
scan the QR code ►



Community Education AND Ending Domestic Violence

When a person is experiencing domestic violence, they are often intentionally removed from their family, friends, and community. People may confuse signs of domestic violence for being withdrawn, flakey, or inconsistent. While power and control may present differently for each person, educating our community makes it possible for someone to recognize that abuse may be occurring.

JBWS works with...



Law Enforcement Officers:

When a law enforcement officer is confronted with domestic violence, they are able to connect them to additional resources because of JBWS' professional training. Once officers have knowledge of programs and services designed to support victims and those causing harm, they are much better equipped to prevent domestic violence.



Other Groups:

JBWS can lead discussions with a handful of your neighbors in a dining room over coffee or make a formal presentation at PTA meetings, business luncheons, places of worship, or other group gatherings. No group is too small for us to talk about domestic violence.



5,182 people
in the community received
education and professional
training in 2024

Recognizing Healthy, Unhealthy, and Abusive Relationships



A Healthy Relationship

- ▶ Communication
- ▶ Respect
- ▶ Trust
- ▶ Honesty
- ▶ Equality
- ▶ Personal time away from each other
- ▶ Choices are made mutually
- ▶ Economic/financial partners



An Unhealthy Relationship

- ▶ Lack of communication
- ▶ Disrespect
- ▶ Trying to take control
- ▶ Only spend time together
- ▶ Pressured into activities
- ▶ Unequal economically
- ▶ Little trust



An Abusive Relationship

- ▶ Communicating in a hurtful or threatening way
- ▶ Accusing the other of cheating when it's untrue
- ▶ Mistreatment
- ▶ Control
- ▶ Denying actions are abusive
- ▶ Isolation from other people

If you're interested in having JBWS at one of your meetings, please email: training@jbws.org



Thank You FOR Supporting JBWS!

10,084
volunteer hours
were spent helping survivors

Thank you to our volunteers

**Wherever there is a need,
our volunteers are there.**

They play tag with children while their parents receive case management, they lay mulch outside our emergency safe house shelter on warm spring days, they respond to victims in hospitals at 3 in the morning, they organize the shelves in our food pantry, they attend court to support victims in obtaining restraining orders, and so much more.

If you're interested
in volunteering,
visit jbws.org/help-us
or scan the QR code. ►



5K for Hope



*Volunteers bag
food donation*



*Autumn Auction
for Hope*



*Donor and Volunteer
Appreciation Event*

Special events

Our special events help fund our lifesaving programs.

Every person who has purchased a ticket to an event, participated in a silent auction, or spread awareness about an event has helped us to break the silence around domestic violence. Thank you for helping us both to serve and reach more people. Thank you!

Thank you for helping us provide such comprehensive services to people impacted by domestic violence. We cannot do this work without you.

If you're interested in attending one of JBWS' special events, scan the QR code or visit jbws.org/events ►



Grand Tastings Event



Backpack distribution



Pickleball at Verizon Hope Classic



Verizon Hope Classic

JBWS LAUNCHED A PODCAST!

Real Conversations About Abuse

“What happens at home, stays at home.” This societal belief is the reason that JBWS launched our new podcast, *Unsilenced: Real Conversations About Abuse*. The goal of this podcast is to dismantle the shame, stigma, and silence that is often associated with domestic violence.

Through conversations with victims, social workers, community members, and psychologists, *Unsilenced*

does not shy away from answering the difficult questions such as: “Why Don’t Victims Just Leave?”, “Why Do People Abuse Others?”, and “Is It Always Better to Stay Together for the Kids?” This blend of personal testimony and professional expertise allows *Unsilenced* to delve into taboo topics with both compassion and an educational focus.



Senator Anthony Bucco discusses why domestic violence is a bipartisan issue

Candy O'Donel-Browne



UNSILENCED
REAL CONVERSATIONS
ABOUT ABUSE



Unsilenced is available on all major streaming platforms in hopes of reaching victims, even if they have been isolated by their partners. Education is the first step in ending domestic violence because it exposes victims to available services and educates our community on how to help.



Stream Unsilenced:
Real Conversations About
Abuse now by scanning
the QR code.

The Legacy Society

JBWS' legacy society has enabled us to expand our residential services and ensure we are always there to answer a call to our 24-Hour Helpline. Because of the legacy society, JBWS is at police departments moments after abuse is reported and how we're able to be by a victim's side as they face their partner in court.

The legacy society also helps JBWS prevent domestic violence at its source through community education and abuse intervention programs. Simply put, we can't do this work without the legacy society.

Just as important as the work that has been accomplished is planning for the enormity of the work that still needs to be done. Your help and support are critical to the future of JBWS. Together we can ensure another nearly 50 years of service to our clients.



Thank you to the following partners that have already made Legacy gifts to JBWS or have included JBWS in their plans:

Ms. DiAnne Arbour
Mr. James M. Bergen
Ms. Linda Grandis Blatt
Ms. June E. Briant
Mr. Felix Braun
Mr. Robert B. Callahan
Mr. Edward M. Doda
Dr. Dawn Gabriel
Ms. Maria M. Hale
Mr. Jon and Mrs. Janet Harrington
Ms. Barbara Ridder Irwin

Ms. Dorothy H. Irwin
Mrs. Leokadia Sardi Jensen
Ms. Mary Kufta
Lee-DeSimone Family Fund
Ms. Mary J. Mooney
Ms. Eleanore Moore
Ms. Virginia H. Pace
Mr. Philip Pagano
Ms. Dorothy J. Parker
Mr. Fred W. Radel
The Children of Carol G. Simon

The William E. Simon Foundation
Mrs. Anne Singleton
Ms. Margaret Stone
Ms. Claire Sullivan
Ms. Maureen Thompson
Mrs. Barbara Dydek Tomlinson
Mr. Norman B. Tomlinson, Jr.
The Tomlinson Family Foundation
Mrs. Gretchen S. Wilcox
Ms. Lucia G. Worley

Become a Member of our Legacy Society!

After providing for your family and loved ones, you may want to remember JBWS in your estate plans. A bequest, annuity, or trust will help to assure the long-term future of the work of the agency.

An example of specific bequest language:

"I give, devise, and bequeath the sum of \$_____ to Jersey Battered Women's Service Inc."

Deviation from this basic language, such as imposing conditions on the gift, may cause your estate to lose valuable estate tax charitable deductions.

If you are interested in leaving a legacy to JBWS, or would like a copy of our Legacy brochure, please contact Helen Le Frois, Vice President of Development, at hlefrois@jbws.org. We'd love to hear from you if you have already included JBWS in your plans.

The sheer amount of community support we receive at JBWS is inspiring. Thank you to everyone who donated presents during our holiday drives, raised money for our programs, gathered necessary supplies, and helped support JBWS' mission.



Scan here to donate





Financials

REVENUE

Contributions		
Individuals and Business	1,075,172	16%
Fundraising	1,019,767	15%
TOTAL	2,094,939	30.7%
Other		
Government	3,148,767	46%
Foundations	550,548	8%
Investment Income	1,019,647	15%
TOTAL	6,813,901	100%

EXPENSES

Personnel	4,198,158	66.1%
Operating	1,899,590	29.9%
Depreciation	256,587	4.0%
TOTAL	6,354,335	100%



EXPENSES BY PROGRAM

Arbour House and Children's Services	1,501,027	23.6%
Simon House and Vocational Services	517,102	8.1%
Community Education and Prevention	55,809	0.9%
Center for Counseling & Advocacy	705,097	11.1%
Jersey Center for Non-Violence	422,363	6.6%
Family Justice Center	461,712	7.3%
Community Housing & Assistance	635,883	10.0%
Administration	1,128,254	17.8%
Fundraising	927,088	14.6%
TOTAL	6,354,335	100.0%



THANK YOU TO OUR DONORS

Partners (\$50,000+)

County of Morris
Ellman Discovery Foundation
Estate of Barbara Tomlinson
F. M. Kirby Foundation, Inc.
State of New Jersey

The Lee-Desimone Family Fund
United States Department of Housing
and Urban Development
United States Department of Justice
Verizon

Benefactors (\$25,000+)

Acrow Corporation of America
AM Higley
Anonymous
Crum & Forster
Mr. and Mrs. James Gerace
Good Morning World Fund
Harris Coy Foundation Trust
Juniper Networks
Ms. Rita A. Karachun

Margaret A. Darrin Charitable Trust
McElroy Family Charitable Foundation
Merck & Company
Mimi Washington Starrett Foundation
Morris County Work First NJ
New York Life Insurance
PricewaterhouseCoopers Charitable Foundation
PricewaterhouseCoopers LLP
William E. Simon Foundation

Patrons (\$10,000+)

AAA Northeast
Accenture
Andrew & Andrea Lupo FFCG
Anonymous
Barclays
Becton, Dickinson & Co.
Mrs. Brooke Bedell-Wiener
Brian & Mary Murphy Family Foundation Inc.
Mr. Paul and Mrs. Therese Davidson
Mrs. Kellie Doucette and Mr. John Doucette
Ms. Theresa Doyle
FirstEnergy Foundation
Mr. Gary Fisch and Ms. Elizabeth Fisch
Galloway, Johnson, Tompkins, Burr & Smith
Mr. Patrick and Mrs. Molly Higgins
Mrs. Kerry Howe and Mr. Sean Howe
Hyde and Watson Foundation

IOLTA Fund of the Bar of New Jersey
JKS Charitable Fund
Mary Kay Foundation
Novartis Corporation
O'Reilly Family Fund
Reilly, McDevitt & Henrich
Robert & Joan Dircks Foundation
Ruffle Family Foundation
Silver Lining Family Fund
The Alexander M. Lillian T. Anthony A. Santulli
Charitable
The Fred C. Rummel Foundation
The William L. Gibson Fund
Thomas and Annette Dircks Family Foundation
TJX Foundation, Inc.
Mr. and Mrs. Jeffrey Wolfanger
Wyndham Hotels & Resorts

THANK YOU TO OUR DONORS

Sponsors (\$5,000+)

Anonymous
Ms. Kim Barna
Beacon Trust Company
Betsy J. Bernard and Laurie J. Peter Giving Fund
Mr. Michael Bey
Catholic Human Services Foundation
Cynthia L Sullivan-Goldenberg Charitable Fund
Daniel J. Wilcox Memorial Fund
Deloitte & Touche LLP
Ms. Regina Egea
Einhorn, Barbarito, Frost, Botwinick, Nunn
& Musmanno, P.C.
Ernst & Young Foundation
Fullerton Grounds Maintenance
Dr. Anthony Fusco
GAF
Mr. and Mrs. Kevin P. Glenn
Mr. Tristan Harding
Harry and Joyce Jareck Giving Fund
Mr. Peter Hernandez
Mr. Jim Huang
Ion Bank Foundation
Kennedys CMK, LLP
KPMG LLP
Mrs. Kelley Kurtzman
Mrs. Helen Le Frois and Mr. Gregory Le Frois
Ms. Bettie LeFebvre
Mr. Kevin and Mrs. Jana Maher
Mariner Wealth Advisors -- Madison, LLC
Dr. and Mrs. Mark McBride
Ms. Archana Mehta
Dr. Marianne Mohr

Mr. Robert and Mrs. Maria Muller
Ms. Valerie Murray
Park Avenue Club
Mr. Michael Perrone
PNC Private Bank
Mr. and Mrs. J. Randolph Porges
Presbyterian Church of Morristown
Mrs. Ann L. Probert
Mr. Vincent Reilly
Shar-Ted Furniture Associates
South + Pine American Eatery
Dr. Heather Stewart-Pyne
The Ann E. Talcott Fund
The Gloria Foundation, Inc.
The Graddick-Weir Family Fund
The Jules Podell Foundation
The Lillian Schenck Foundation
The O'Hagan Family Fund
The Paragano Family Foundation
The Paul B. Greetin and Beryl S. Greetin Foundation
The Siegfried Group
Valley National Bank
Wind River
World Wide Technology Holding



Donors (\$2,500+)

Ms. Sandra Addo
 ADP Foundation
 Ms. Susan Albin and Mr. Michael Juliar
 Mr. Scott and Ms. Jackie Alfieri
 Allstate Sales Group, Inc.
 Anonymous
 Mr. Scott R. Bechtloff
 Mr. Adam Berkowitz
 Ms. Kelly Berton Rocco
 Ms. Luca Bonardi
 Carisk Partners
 Country Carts, Inc.
 Ms. Laura Deutch
 Ditchek Family Trust
 DJB Event Consultants Inc.
 Ms. Amy Durling
 Enterprise Holdings Foundation
 Ms. Lindsay Friedman
 Mr. Brian Fritz
 Mr. Brian Giovinnazzi
 Goodman North America Management LLC
 Ms. Danielle Graddick
 Ms. Glenda Haase
 Mr. Thomas and Mrs. Suzanne Hall
 Ms. Gisela Harpell
 Helpsy
 Mr. Terrance Hendricks
 Mr. Brian Higgins
 Ms. Heather Howlett
 Mr. Michael Jerlecki
 Knights of Columbus NO 359
 Mr. Steven and Mrs. Maria Kohutic
 Moderna Therapeutics
 Mrs. Jamie Molchan

Mr. Barry G. Moss
 Ms. Melanie Nicholson
 Nisivoccia LLP
 Peapack-Gladstone Bank
 Ms. Annie Petrocelli
 Poshmark Inc
 PSE&G
 Reed Smith Shaw & McClay LLP
 Mr. Don and Ms. Merryl Richards
 Mr. Guy and Mrs. Laura Russell
 Ruth J. Zowader and Philip M. Anderson Fund
 RxLogix Corporation
 Mr. Tom Sabol
 Schumacher Chevrolet of Livingston
 Mr. Jeffrey Simon and Mrs. Madeline Simon
 Mrs. Anne Singleton
 SkyPath Private Wealth
 Mr. Anthony Slimowicz and Mrs. Lynn Johnston
 Stryker
 Synchrony Bank
 Ms. Colleen Szuch
 The Edward C. and Edith B. Parker Charitable Fund
 The Frelinghuysen Foundation
 The Hartford Philanthropic Fund
 The Ruth Silverman-Rosenbloom & Victor H
 Rosenbloom
 The Virginia Metzler Family Charitable Foundation
 Mr. Daniel Tozzi
 Tri-County Orthopedics
 Mr. Juan Trillo
 Verizon PAC Match
 Ms. Kimberly Watts
 Ms. Sharon White-Scalies
 Z & M Management Inc



Supporters (\$1,000+)

Ms. Virginia Alling	Mr. Patrick Durbin
Mr. Mike Altland	Mrs. Ann Edattel
Ms. Barbara Anelle	Ms. Latoya Edwards
Anonymous	Ms. Eileen Egan
Apple	Ms. Beth Elenwune
Ms. Karen Arakelian	Mr. Austin Fernandes
Mr. Brent and Mrs. Shari Ashton	Mr. Gerald Flynn
Mr. Jeffrey and Mrs. Mary Bagley	Mr. Anthony Forte
Mr. Frank Barra	Frankel Magidson Family Fund
Assemblyman Christian Barranco	Fraternal Order of Eagles Aerie 1311
Barry Novin Charitable Foundation	Mr. Vincent Frisina
Mr. Jeffrey and Mrs. Leanna Bashe	Ms. Susan Gajarsky
Ms. Lisa Berkery	Gardner Family Fund of CFNJ
Ms. Melissa Bird	Ms. Faith Ginsberg
Mr. Andrew Bittons	Gloria Dei Lutheran Church WELCA
Ms. Linda Boney and Mr. Paul Boney	Ms. Michelle Goldman
BRIC, LLC	Ms. Gina Goodheart
Ms. Flora Brophy	Ms. Mirian Graddick-Weir
Mr. Geoff Brzuchalski	Mrs. Carol Graham
Ms. Amy Bucco	Mr. Stephen Gray and Ms. Kathleen Ulrich
Ms. Theresa Buniak	Ms. JoAnn Graziano
Mrs. Britt Byers	Mr. Frederick Gruel
Mr. David Carey	Ms. Samantha Guatta
Ms. Jamie Carpenter	Ms. Xoana Guzman
Mr. and Mrs. Michael Carroll	Ms. Connie Hagelin
Ms. Katherine Carter	Mr. Bruce Haskell
Casale Charitable Gift Fund	Mr. Gates Helms and Mrs. Mary Ellen Hawn
Cedar Crest Protestant Council	Mr. Erik Herrington
Ms. Rebekah Chase	Ms. Linda Horn and Mr. Leonard Horn
Church & Dwight Employee Giving Fund	Mr. Thomas Iannacone
Ms. Lauren Clark	Independent Thrift Shop
Ms. Nancy and Mr. Charles Clark	Jackson Family Practice/Consensus Health
Community Builders NJ Inc.	Johnson & Johnson Matching Gift Program
Connect for Community	Jonathan and Suzanne Glenn Family Foundation Fund
Mr. and Ms. Christopher Connors	KANYAA
Ms. Beth Correa	Ms. Barbara Katz
D and R Price Fund	Mr. Andrew Keating
Mr. John DeAmorin	Kraus Restoration
Ms. Marilyn Dee	Mr. Andrew and Mrs. Elizabeth Kriegman
Ms. Kathy DeFillippo and Mr. Bob DeFillippo	Mr. and Ms. Ken Lain
Ms. Andrea DelMauro	Mr. Alexander Langlois
Ms. Alexandra Destin	Ms. Alexis Laufer
Ms. Vickie DiCianni	Mr. William Lenhart
Ms. C Lynn Dolan	Ms. Margot Lewis
Douglas and Catherine Brown Fund	
Ms. Katie Dunn	

Supporters (\$1,000+)

Mr. and Ms. Stephen J. Linskey
 Long Valley Junior Women's Club
 Ms. Sonia Luaces
 Ms. Sasha Lucas
 Ms. Eva Lutz
 Ms. Donna Lyden
 Ms. Laura Marcy
 Ms. Kathleen Margolis and Mr. Joe Margolis
 Ms. Ronita Mathias
 Mrs. Mary Jane and Mr. James McCarthy
 Ms. Keira McDonough
 Ms. Elizabeth McKenna
 McMahon Family Charitable Gift Fund
 Mr. Palak Mehra
 Ms. Monica Melancon
 Merry Heart Assisted Living LLC
 Ms. Joeline Miller
 Ms. Claire Mindo
 Ms. Kerry Mohan
 Ms. Vlasta Moravkova
 Morristown Rotary Club
 NECA Services
 Ms. Olga Netto
 Mr. Andrew O'Connor
 Mr. Kathleen O'Reilly
 Mr. David and Mrs. Elizabeth Owens
 Ms. Arleen Paladino
 Mr. Jason Pastor
 Mr. Robert Paz
 Mr. Felix Perez
 Ms. Laurie Peter and Ms. Betsy Bernard
 Mr. Michael Petrane
 Pivot 46 LLC
 Ms. Jama Podell-Vitale
 Presbyterian Church of Morris Plains
 Ms. Michele Raber
 Randolph Education Association
 Raritan Group Inc
 Ms. Ninna Roco
 Mr. and Ms. Shawn C. Rogers
 Ms. Kathleen Sabia-Cahill
 Samsung Electronics North America
 Mr. and Mrs. Barry Schub
 Ms. Donna Schwartz
 Mr. and Mrs. Cary M. Schwartz
 Dr. and Mrs. Christopher W. Sciales
 Ms. Grace Shin and Mr. Eric Inglis
 Ms. Anna Simansky

Ms. Carolyn Slaski
 Mr. and Ms. Billy Smith
 Mr. Matthew Snitkey
 Sons of Italy - Local 2561
 Ms. Ashley Speranza
 St. Patrick's Day Parade Of Morris County, Inc.
 Ms. Mary Stine and Mr. Richard Stine
 Subaru
 Ms. Christina Sudler
 Ms. Rosalie Szydal
 Mr. and Ms. Robert B. Tafaro
 Mrs. Ann Talcott
 The Andrews Charitable Fund
 The Christopher Mayer & Gail Crofoot
 Charitable Fund
 The Claudia E. Mott Fund
 The Glenmede Trust Company
 The Hecht Foundation Inc
 The John Bickford Foundation
 The KRD Charitable Fund
 The Lonon Living Trust
 The Mall at Short Hills
 The Schreiber Bogan Fund
 The Smith-Caroscio Family Fund
 The Tiger Baron Foundation, Inc.
 Mr. and Mrs. Frederick W. Thoeni
 Tiffany & Company
 Mr. Jim E. Torney
 Town Title Agency
 Mr. Anthony and Mrs. Michele Trapasso
 Ms. Katherine Truppi
 Tugentman Family Fund
 Ms. Sarah Turner
 Ms. Erica Vandell
 Verisk Analytics
 Ms. Dawn M. Verrinder-Cormier
 Ms. M. Elaine Vincent
 Ms. Shawna Wagner
 Walmart
 Walsh Family Fund of CFNJ
 Ms. Laurel Welch
 Ms. Rosie Zbeda
 Zimmer Biomet
 Mr. James Zucker

Contributors (\$500+)

Academy of Saint Elizabeth
 Ace-Braemer Fund
 Ms. Kathleen Alicks
 American Legion Post 59 Morristown
 Mr. Mario Andreotti
 Ms. Alyson Andrus
 Anonymous
 AT&T
 AYUDH NJ (Amrita Youth for Unity, Diversity,
 and Harmony)
 Ms. Elizabeth Bacot-Aigner
 Ms. Mary and Mr. Ronald Baughman
 Ms. Judith Bayard
 Mr. Tom and Mrs. Amy Beversluis
 Knights of Columbus Bishop McLaughlin Council
 3495
 Mr. Chad Bonn
 Ms. Regina Braham and Mr. David Braham
 Mr. Paul Brensilberf
 Ms. Noel Briordy
 Ms. Jo Brower
 Mr. Donald Bucciarelli
 Ms. Jill Buchanan
 Ms. Elizabeth Burger
 Ms. Rebecca Burke
 Carver Delaney Families Foundation, Inc.
 Mr. and Mrs. Pat Caspersen
 CDK Global
 Ms. Patricia Chambers
 Ms. Sushant Chennapragada
 Church of the Saviour
 Ms. Kathleen Clymer
 Mr. Robert and Mrs. Janet Cole
 Mr. James Coleman
 Ms. Cathy Coloff
 Community Church of Mountain Lakes
 Mr. William Copeland
 Ms. Carolyn Curtis
 Ms. Shacara and Mr. Jorge Delgado
 Mr. Eduardo DeMarco
 Mr. Daniel Dinan
 Ms. Andreia DiPietropolo
 Mr. Joseph Dobronyi
 Mr. Bret Dooley
 Ms. Margaret Dukes
 Mrs. Lauren Dunn
 Ms. Courtney Durling
 Engineering Management Institute
 Fairleigh Dickinson University
 Family and Cosmetic Dentistry of Randolph
 Fashano Family Gift Fund
 Ms. Maria Fehling
 Ms. Victoria Felix
 First Presbyterian Church of Rockaway
 Mr. Matt Fleisner
 Ms. Noel K. Foley
 Ms. Terri Freedman
 The Honorable Rodney P. Frelinghuysen
 Ms. Deana Furino
 Mr. Claude Fusco
 Dr. Dawn L. Gabriel
 Mr. Richard and Mrs. Mary Gallagher
 Mr. John and Allyson and Mrs. Allyson Gallup
 Mr. Richard Gebig
 GFWC Woman's Club of the Denville-Rockaway Area
 Givinga Foundation, Inc
 Mr. Adam Glauber
 Ms. Maryella Gockel
 Mr. Scott Gould
 Ms. Mirian Graddick-Weir
 Mrs. Helen E. Hallberg
 Ms. Mary Ellen Hancock
 Ms. Virginia Hawkins and Mr. Russell Hawkins
 Mr. Stephen and Mrs. Laura Heil
 Mr. Frank Henderson
 Ms. Candace Henderson
 Mr. Jonathan Hirschfeld
 Mr. David Hochhauser
 Hope Church
 Ms. Mary Hurd
 Impact Health
 IT Radix
 Ms. Jaya Iyer
 Mr. John Izzett
 Jean Edwards Cellars LLC
 Jeri and Matt Frankel Charitable Fund
 Mr. Philip Jodz
 Mr. Sid and Mrs. Martha Jones
 Mr. Michael Kacsma
 Ms. AnneMarie Keegan
 Ms. Pam Kelleher
 Ms. Carol Kennedy
 Mr. Franzi Khiabani
 Ms. Caren Khoo
 Ms. Essra Kibler
 Ms. Carolyn Kleinman

Contributors (\$500+)

Mr. Jeffrey Knight
 Mr. and Ms. Robert Kolakowski
 Ms. Aru Kulkarni and Mr. Amol Kulkarni
 Mr. David Kweselait
 Ms. Tonya L. Lain
 Ms. Angela Laufer
 Ms. Sheryl A. Lee
 Ms. Melissa Leonard
 Ms. Isabel Lerman
 Mr. Fritz Leshner
 Ms. Lynne Lewis
 Ms. Alison Little
 Mr. Cameron and Mrs. Fiona Lochhead
 Ms. Nicole Longo
 Mr. Chadd and Mrs. Sasha Lucas
 Ms. Elizabeth Luckhurst
 Ms. Kristin Lynch
 Macquarie
 Ms. Lorryn Mai
 Ms. Dikshant Malla
 Mr. Spencer Marsh
 Ms. Megan McCarthy
 Mr. David and Mrs. Jessica McGuire
 Mr. Gregory Menarguez
 Ms. Marie and Mr. James Messina
 Ms. Courtney Mezinis
 Ms. Larissa Minitelli
 Ms. Sabrina Model
 Mr. Kyle Moffatt
 Ms. Rebecca Moody
 Morris Plains Rotary
 Ms. Ujwala Mulgaonkar
 Mr. and Mrs. Robert J. Noelke
 Ms. Shannon O'Connor Bock
 Mr. Jonathan Odom
 Ogden Memorial Presbyterian Church
 Mrs. Judith and Mr. Tim Otterman
 Ms. Kelly Paone
 Paradigm Marketing
 Ms. Carin Parella
 Ms. Deepali Patel
 Ms. Swati Patel
 Mr. Luke Pavlin
 Pearly Family Foundation
 Mr. James Piazza
 Pledgeling Foundation
 Prudential Foundation Matching Gifts
 Ms. Judith Raines

Mr. Michael and Mrs. Virginia Ranger
 Ms. Dawn Robertson
 Mr. Aaron Rosenberg
 Mrs. Patricia and Mr. Randy Rossilli
 Mr. Jeffrey Roth
 Ms. Katie Searce
 Mr. Dawn And Bill Schieffer
 Mr. Larry Schilling
 Ms. Rory Serrano
 Mr. Louise Shurtleff
 Ms. Lucy Shurtleff
 SKC & Co.
 Mr. Adam Smith
 Mr. James and Mrs. Kris Sonneborn
 Sparta United Methodist Church
 Ms. Melissa Spencer
 Ms. Dana Stokes
 Ms. Meredith Strangfeld
 Mr. Jacob Terrell
 The Dee/Stone Family Fund
 The Idrees and Patricia E. Ahmad Foundation
 The Stover Family 2017 Charitable Assurance Fund
 The William and Joan Barras-DeVizio Donor
 Advised Fund
 Mr. Brian Torchen
 Trinity Lutheran Church
 Mr. Ryan Turner
 Mr. and Ms. John Ubhaus
 United Way of Greater Atlanta
 United Way of Southeastern PA
 Mr. and Ms. Richard Van Duyne
 Mr. Stephen Verrone
 Ms. Kate Virmani
 Visa
 Ms. Jennifer Vriens
 Warren L. and Lorraine L. Passmore Charitable
 Gift Fund
 Ms. Bonnie Weiss
 Mr. David Wiessel
 Ms. Lynn Williams
 Ms. April Wirtz
 Mr. Robert Wiss
 Ms. Karen Young
 Ms. Jennie Zanas
 Ms. Christine Zeikel
 Ms. Cynthia L. Zey
 Ms. Euclid Zurbaran



Friends (\$250+)

Ms. Lynne Acla
AIG Matching Grants Program
Mr. Abdul Ajani
Ms. Elizabeth G Alton
Anonymous
Arthur J Gallagher
Ms. Lisa Baker
Bank of America Foundation
Mr. Mark Barron
Ms. Margaret Bartlett
Ms. Victoria Bashant
Ms. Ana Bautista
Mrs. Deborah Belfatto and Mr. Joe Belfatto
Ms. Deborah Bello
Ms. Rachel Benfante
Mrs. Peggy Bergh
Ms. Colleen Bewalder
Mr. Ravi R. Bhuta
Mr. Steven Blea
Mr. Michael A. Blumenthal
Mr. John Blumers
Mr. Mark Bode
Dr. Hermann and Mrs. Ursula Boehnke
Mr. Gary Botwinick and Mrs. Susie Botwinick
Mr. Ryan Bratton
Mr. Alan Braun
Mr. Tom Bredahl
Ms. Ginger Brennan
Ms. Kristina Bunch
Ms. Megan Bury
Ms. Robin Carroll-Mann
Ms. Lynn Castrataro and Mr. Jeffrey Grayzel
Center for Spiritual Living North Jersey
Christine M. Kramer Memorial Fund
Ms. Frances Cirelli
Mr. Fern Coleman

Constellation
Mr. Brian Cooney
Mr. Stefano Crema and Mrs. Jeryl Crema
Ms. Lisa Cupelli
Mr. Zach Dabah
Mr. Andrew Dachisen
Ms. Melissa DAgostino
Mr. Matthew Daly
Mr. Peter Dannenbaum
Ms. Jeananne Devaney
Ms. Maria Di Zio
Ms. Christine Difabio
Ms. Francis Dougherty
Mr. Brendan Dunn
Mr. Todd Egan
Empower Retirement LLC
Ms. Diane Farrell
Mr. Scott J. Feely
Ms. Katherine Fehon
Ms. Cleo Filis
Ms. Mary Grace Finn
First Presbyterian Church of Stirling
Mr. Chris Flood
Ms. Jennifer Flynn
Mr. Michael Forte
Mr. Jonathan Freve
Mr. Jeffrey Friedman
Mr. Thomas Gaidimas
Garden State Quilters
Ms. Paula George
Ms. Siobhan Gilfillan
Ms. Allison Gogarty
Mr. H. John Greeniaus and Mrs. Sheridan Greeniaus
Ms. Mary Guatta
Ms. Melissa Hagan
Hanover Park High School ERASE Club

Friends (\$250+)

Ms. Kristin and Mr. Keith Hayes
 Ms. Susan Hayes and Mr. Rade Popovic
 Mr. Joshua Herron
 Ms. Sarah Hersey
 Ms. Nicole J. Hinton
 Mr. Mike Hoarle
 Mr. Ken Hopkins
 Mr. and Mrs. Brad Hopton
 Mr. Patrick Horn
 Mr. John J. Huff
 Mr. and Mrs. James Hughes
 Mr. and Ms. Michael J. Humienny
 Ms. Katherine Hunter
 Mr. and Ms. Robert J. Iracane
 Ms. Lauren Jelinek
 Mr. Alan and Ms. Jill Johnson
 Mr. Eric Johnson
 Ms. Dianne and Thomas and Mr. Thomas Jones
 Joseph P. and Mary Lynn Hehl Charitable Fund
 JP Morgan Chase Foundation
 Ms. Stacey Kalambakas
 Mrs. Lara Kanjo
 Mr. Pallav Kapoor
 Mr. Stewart Katz
 Mr. Christopher Kean
 Ms. Karen M Keelty
 Ms. Kayla Kennedy
 Ms. Helena Kernier
 Mr. Steve and Mrs. Dorothy Kroll
 Mrs. Jane Kurek and Mr. Michael Kurek
 Ms. Brigid S. Lamb
 Ms. Laura Lampron
 Mr. Daniel and Mrs. Rose Landis
 Ms. Peggy Lenahan
 Mr. Andrew Leung
 Ms. Barbara G. Levinson
 Liberty Mutual
 Ms. Sandra Lin and Mr. Patrick Lin
 Ms. Bethann Lipke
 Ms. Patricia Lowe
 Lupatkin Timins Fund
 Madison High School
 Mr. Chanpen K. Maher
 Ms. Meral Malady
 Mr. Nicholas Mangino
 Mark E. & Barbara C. Vermilyen Charitable
 Gift Fund
 Ms. Mari Marques-Thomas
 Ms. Jacqueline Marrone
 Ms. Lisa Martin

Ms. Marlie Massena
 Mr. John May
 Mrs. Linda H. McCabe
 Mr. Matthew McCann
 Mr. Edward and Mrs. Mary Jane McGuire
 Mr. Laurence McMillan
 Ms. Meredith McNierney
 Mrs. Elizabeth and Mr. Christopher McReynolds
 Ms. Ellen McSherry
 Ms. Nancy Mehaffey
 Mr. Rishi Mehta
 Mr. Hector Mislavsky and Ms. Judy Martinez
 Mr. and Ms. Harold F. Moore
 Ms. Mallory Morales
 Morris Knolls Booster Club
 Morristown Unitarian Fellowship
 Mr. L. Morton
 Ms. Chelsea Mott
 Ms. Meghan Mullin
 Ms. Dori Murphy
 Ms. Lori Musmanno
 Ms. Nicole Nicholson
 Norris Family Fund
 Mr. Anthony Noto
 Ms. Jovita Nwosu
 Mr. Arnold M. Olshan
 Mrs. Laurie Pandorf
 Mr. and Ms. David W. Panhorst
 Ms. Natalie Parish
 Ms. Mary Lou Pastore
 PerformLine
 Mr. Roy Persson
 Ms. Lisa Phillips
 Mr. Chris Pierce
 Ms. Stacey Plichta-Kellar
 Ms. Christina Previte
 Principal Financial Group
 Ms. Barbara Puglisi
 Ms. Holly Puleo
 Mr. Daniel Rice
 Riker Danzig LLP
 Ms. Laura Robinette
 Ms. M.C. Robinson
 Ms. Crystal Rodrigues
 Mrs. Karen Rossilli-Kiefer and Mr. Jack Kiefer
 Ms. Eve Russo
 Mr. Paul-Auguste Salvado
 Mr. Matthew Scanlon
 Mr. and Ms. Peter E. Schmiedhauser
 Ms. Cynthia Schue

Mr. and Mrs. Joseph Schwartz
 Ms. Pamela Seelig
 Mr. Brian Seidner
 Mr. Paul Selver and Ms. Ellen Selver
 Mr. Chris Serrano
 Mr. Chuck Sgammato
 Mr. Larry Shapiro
 Mr. Mark Shearman and Ms. Linda Bohrer
 Ms. Allison Shearman
 Mr. and Ms. Robert Sherman
 Mr. Dennis Shlionsky
 Mr. Asaad Siddiqi
 Ms. Jackie Sims
 Ms. Amy Smith
 Mr. Darrin Sohre
 Mr. Rich Sosanie
 Mr. Ryan Spencer
 Mr. Michael Stein
 Stirling Tavern
 Mr. John Swadba
 Mr. Thomas Tapen
 TE Connectivity
 Mr. Louis Testoni
 Mr. and Mrs. James S. Thieringer

Ms. Lynne Thompson
 Ms. Sandra Thompson
 Ms. Michelle Trosper
 United Way of Hunterdon County
 Ms. Gretel Uptegrove
 Mr. Michael Uszacki
 Mr. Jeroen van Paassen
 Mr. Maximo Vargas
 Mr. David Verderami
 Ms. Elizabeth Verrico
 Ms. Krystal Voelker
 Mr. Michael Wall
 Ms. Susanna Webber
 Mr. James Weiss
 Mrs. Patricia Weissner
 Mr. George and Mrs. Sharon Wiener
 William C Sweeney Family Fund
 Mr. Marc Wolin
 Mr. Jing Wu and Ms. Yamei Wang
 Ms. Katherine Wu
 Ms. Sarah Yae
 Ms. Christine Zelinsky
 Zwiren Title Agency Inc

Individuals (\$100+)

Mr. Khushboo Abhichandani
 Ms. Sabrina Abramson
 Mr. Gustavo Abreu
 Mr. John Aglialoro
 Mr. BJ Agugliaro
 Ms. Katie Albanese
 Mr. and Mrs. John W. Alexander
 Ms. Amy Allegretti
 Mr. Robert and Mrs. Elizabeth Alper
 Ms. Erin Amaty
 Ms. Usha Ananth
 Anonymous
 Mr. and Mrs. Joseph Apicella
 Ms. DiAnne Arbour and Mr. James Bergen
 Ms. Helen Archontou
 Ms. Jennifer Arocho
 Ms. Ariane Auster
 Ms. Robin Ballard

Mr. Geoff Ballotti
 Ms. Kathleen Banks
 Mr. John Barresi
 Mr. Stephen and Mrs. Theresa Barrow
 Ms. Tracy Basso
 Mr. Suvajit Basu
 Ms. Ariana Bath
 Ms. Neda Bavrlic
 Mr. James Bedell
 Ms. Catherine Behre
 Mr. Matthew Bell
 Ms. Natalie Benderly
 Mr. Jeff Bershad
 Ms. Sonal Bhat
 BI Worldwide
 Ms. Stephanie Biery
 Ms. Adrienne Binik-Chanin
 Ms. Yvette Merle Blackman

Individuals (\$100+)

Mr. Shawn Blair	Ms. Anna Collelli
Ms. Michelle Blanchfield	Columbiettes of Parsippany 3680
Bliss Hair Salon	Ms. Mallory and Mr. Wayne Copeland
Mr. Robert Blocker	Ms. Margaret Corsi
Mr. Ken Boccino	Mr. Shawn Cortese
Boonton United Methodist Church	Ms. Maria Crocco
Ms. Christine Brembs	Ms. Karin Curry
Mr. John and Mrs. Joann Brett	CVS Health
Bristol-Myers Squibb Company	Ms. Robyn D' Elia
Ms. Ellen and Dr. Peter Brody	Mr. Jim Damiano
Mr. and Mrs. Geoffrey Brooks	Ms. Marie Damiano
Ms. Elizabeth Brown	Mr. Feizhen Dang
Ms. Lisa Brown-Freeman	Mr. James DArecca
Mr. Pat Brueggman	Ms. Tatiana Dash
Ms. Mary Bruketta	Ms. Florian de Boer
The Honorable Anthony R. Bucco	Ms. Anna-Jane De Grossi
Ms. Cristina Buendia	Ms. Gian De Silva
Ms. Anita Bullen	Ms. Marjon Dean Stansberry
Ms. Dorothee Burchartz	Ms. Virginia Delalla
Ms. Adriana Burns	Mr. Francis and Mr. Bobo (Barbara) Delaney
Ms. Constance Buttomer	Ms. Casilda DelaRosa
Mr. Scott Byers	Ms. Kristen DeLeo
Mr. Christopher Cable	Mr. Chris DelOrefice
Ms. Kathleen M. Cammarata	Mr. Jerry DelSordo
Mr. Rob Campanelli	Mr. Francisco DeOliveira
Ms. Ana Canali	Ms. Lidia Deoliveira
Mrs. Judith Cannon	Ms. Maya Desai
Mr. Christopher Carney	Ms. Courtney Deverall
Ms. Margaret Casella	Ms. Lauren Dieterich
Mr. Paul Cash	Dinner by Dee LLC
Ms. Cynthia Casiano	Ms. Deana DiPace
Mrs. Pat Casperson and Mr. Sidney Casperson	Mr. Leland Domaratzky
Ms. Judith Cassella	Ms. Nancy Donatiello
Ms. Antonietta Castano	Ms. Mary Donelik
Ms. Yolanda Castro-Wojacek	Mr. James Dowd
Mr. and Ms. Russell Catania	Ms. Judy Dowiak
Ms. Catherine M. Cerbo	Ms. Valerie Doyle
Mr. Rodica Ceslov	Ms. Jeanmarie Dunn-Kane
Ms. Gabby Cestone	Ms. Christine Edwards
Ms. Bhavani Chandramouli	Ms. Fidelle El Asmar
Chester Lioness Club	Ms. Sarah Elliott
Ms. Jennifer Ciccarella	Ms. Michelle Ellwanger
Ms. Christine Cicenica	Mr. Dave Engelson
CIGNA	Ms. Melanie Evans-Lowenberger
Ms. Dora Cioce	Mr. Matt Fallivene
Ms. Hannah and Ms. Meghan Ciullo	Mr. Joseph and Mrs. Maureen Fazio
Mr. Brian Cleary	Mr. Brian Feder
Mr. John Coffey	Ms. Joy Fernandez
Ms. Diane M. Coffman	Ms. Hayley Fiksen
Ms. Lee Ann Cole	Ms. Lynn Finkel

Mr. and Mrs. Daniel Finnegan
Ms. Lorraine First
First Presbyterian Church of Succasunna
Ms. Cindy Fleischer
Flocktown-Kossmann Elementary School
Mr. Baruch Follick
Ms. Laney Foultz
Ms. Phyllis Fox
Ms. Kathy Fudali
Ms. Samantha Fuller
Ms. Christine Gabriel
Mr. and Mrs. Nicholas Gakos
Ms. Ajuba Gaylord
Ms. Kathleen Gentile
Mr. and Mrs. James J. Gerace
Ms. Theresa Gerber
Mr. Robert Ghelli
Ms. Susan Gillece
Mr. Brian Giovinazzi
Mr. Matthew Gluck
Ms. Shelby Godfrey
Mr. Jeremy Godwin
Mr. Robert Goldberg
Ms. Karen Goldman
Mr. Frank Gonnella
Ms. Rachel Gossett
Ms. Diane Govelitz
Ms. Lynn Graham
Ms. Maureen Grant
Ms. Carol Greczner
Mr. Anthony Greenfield
Ms. Laura Greenwald and Mr. David Strom
Ms. Arianna Grimes
Ms. Madeline Grob
Mr. Pat Haffner
Ms. Judy K. Hahn
Mr. Jin Han
Mr. Eric Hanson
Ms. Veronica Harner
Ms. Juli Harpell-Elam
Ms. Ashlee Harris
Ms. Kathryn Hart
Mr. Richard and Mrs. Jacquelyn Hartley
Ms. Mary Jane Hastings
Mr. Thomas and Ms. Valerie Haverty
Ms. Heidi Hawkins
Mr. John Hayes

Ms. Tammy Haynie
Mr. Brett Hecker
Ms. Eileen Heider
Mr. John Hennessy
Mr. Florence and Mrs. Florance Henry
Mrs. Joyce C. Henry
Ms. Lexi Heon
Mr. Michael Heyert
Ms. Joanne Heyert
Ms. Meghan Heyert
Ms. Erin Hiller
Ms. Theresa Hinton
Mr. Jeff Hitland
Mrs. Stephanie Loel Holloway and Mr. Peter Holloway
Ms. Anh Hollowell
Mr. Michael and Mrs. Lizabeth Holt
Mrs. Sunita Holzer
Ms. Brianne Horn
Ms. Lisa Huber
Mr. and Mrs. Mamoun Hussein
Ms. Kate Hyde
Mr. Louis Iovine
Ms. Sandra Jackson
Mr. and Mrs. Howard Jacobs
Mr. Steven Jacobs
Mr. and Mrs. Gary E. Janiszewski
Ms. Shani Jarvis
Mr. Sean Johnson
Mrs. Jaclynn Johnson



Individuals (\$100+)

Johnson & Johnson
Mr. Patrick
and Mrs. Christina Jonas
Mr. Thomas and Mrs. Penny Jones
Ms. Barbara Jones
Ms. Susan Karlowitz
Ms. Loralyn Keating
Ms. Susan Kelemen
Ms. Christine Keller
Mr. and Mrs. David M. Kelly
Mr. John P. Kennedy Jr.
Ms. Patricia Kercher
Mr. Nicholas Kick
Ms. Melissa Kiefer
Mr. Joe Killian
Mr. Gio Kim
Ms. Kathleen Kirk
Mr. Kenneth Klein
Ms. Eva Klein
Ms. Randy Kornberg
Ms. Rachel Korsky
Ms. Val Kostenko
Mr. and Ms. Walter Krich
Ms. Tabitha Krier
Mrs. Carolyn Krug
Kubale Family Foundation
Mr. Adauctus Kuffar
Mr. Prabodh Kumar
Mr. John Kuntz
Ms. Rhonda Kupin
Ms. Angelina LaFera
Ms. Tiffany LaFera
Ms. Maureen Laing
Mr. Peter Larkin
Mr. Stuart Lasser
and Ms. Tracey Ibsen
Ms. Laz Lazarou
Mr. Robert Lazarus
Lee F Haase LLC
Ms. Marcela Lenox
Ms. Susan Leone
Ms. Lisa Libman
Mrs. Cherry Liloia
Ms. Nicole Liotta
Ms. Yvette Lippoczy
Ms. Lisa Baker
Mr. Adam Lisman
Mr. and Ms. Ronald Litchkowski
Ms. Jennifer Livelli
Ms. Jenny Loan
and Mr. Michael Pirozzi

Dr. Mary Ann LoFrumento
and Mr. John Hallacy
Ms. Julie Longa
Mr. John Longo
Mr. Richard Lopez
and Mrs. Yasmin Lopez
Dr. and Mrs. Lawrence A. Lubow
Mr. Brendan Lynch
Ms. Robin Lyng
Mr. Kyle Malady
Ms. Lauren Maldonado
Ms. Lillian Maltese
Mr. Timothy Manasterski
Ms. Barbara Manger
Ms. Hayley Manger
Mr. and Mrs. John D. Manna
Ms. Fran Mareiniss
Mr. Kevin Margolis
Ms. Jerilyn Marino
Ms. Rachel Marra
Mr. Kyle Maryanski
Ms. Elise Masella
Ms. Eileen G. Mathews
Ms. Mary Matosian
Mr. Thomas
and Mrs. Christine Maxwell
Ms. Margaret McArdle
Mr. Mike McCarthy
Mr. Keith McCormick
Mr. Gregory
and Ms. Lynmarie McCullough
Mr. B. Alan McDermott
Ms. Betina McDonough
Mr. Matthew McFarland
Ms. Jessica McGovern
Mr. Daniel McGuire
Ms. Jaime McLaughlin
Mr. and Mrs. Daniel J. Meehan
Ms. Kerry Mellott
Ms. Sheri Merkel
Mr. Kenneth
and Mrs. Lenore Mertz
Ms. Diane Metzler
Ms. Maggie Mezza
Mr. Patryk Mielnicki
Mr. Isaac Millar
Ms. Jacklyn Miuccio
Mr. Khundnir Mohammed
Montville Reformed Church
Mission Circle
Ms. Jessica Moore
Mr. John Moran

Ms. Shea Moran
Mr. Andrew Morris
Morris County NOW
Morris Hills Education Association
Morris Plains Pharmacy
Mr. Justin Moss
Mrs. Francesca Moum
Ms. Dawn Mueller
Mr. and Ms. Stephen J. Muretta
Mr. Rolando Murillo
Mr. Kevin Murphy
Mr. Chris Mutter
Ms. Suzanne Mutz-Darwell
Ms. Athean Myat
Mr. Miguel Myhrer
Ms. Elizabeth Nader
Mr. and Mrs. Robert Nelson
Ms. Lynn E. Nelson
Network For Good
Mr. Cricket Newfrock
Mr. James Newman
Ms. Elizabeth Newson
Next Generation Training Center
Ms. Samantha Ngu
Mr. Philip
and Mrs. Genevieve Nicastro
Ms. Deborah Nungester
Ms. Nancy OBrien
Ms. Carol O'Connell
Mr. Robert O'Connor
Mr. Steve and Mrs. Laura O'Connor
Ms. Nancy O'Donnell
Mr. Bruce and Mrs. Mary Oliver
Mr. Jon and Mrs. Laura Olstein
Orange/West Orange
Unico Foundation
Ms. Tatiana Orozco
Mrs. Maria and Mr. Paul Palamara
Mr. Krishna Paliwal
Palo Alto Networks
Ms. Marina Pantina
Mrs. Chelsea Parker
Ms. Tracy Parrillo
Mr. Alan Paul
and Ms. Rebecca Bumenstein
Ms. Lydia Peddicord
Peddle Giving Fund
Mr. Eric Pedersen
Mrs. Karen D. Pela
Ms. Cynthia Perez
Mr. David Pergola
Mr. Richard Perna

Ms. Jessica Peruyero
 Mr. Massimo Peselli
 Mr. Robert
 and Mrs. Geraldine Petrucelli
 Ms. Sarah Pharaon
 Mr. Robert Picerni
 Ms. Linda Pierce
 Mr. Anthony Pizzuto
 Ms. Stacey Plichta
 Ms. Charlene Polin
 Mr. Nimrod Posner
 Ms. Teresa Preskar
 Mr. Chuck Privitera
 Ms. Deborah Procaccio
 Mr. JJ Pullaro
 Mr. Jonathan
 and Ms. Bethany Rabinowitz
 Dr. Ramjee
 and Mrs. Andal Raghavan
 Ms. Pranita Raghavan
 Mr. Richard Ramsay
 Ms. Lena Raposo
 Ms. Karen Reed
 Mr. James Renahan
 Ms. Lisa Resciniti
 Mr. Matthew Rheingold
 Richard Ughetta Charitable Fund
 Ms. Adelaide Riggi Cutalo
 Ms. Debi Riska
 Mr. Mike Ritter
 Ms. Jackie Rivera
 Robert and Loriann Skea
 Charitable Fund
 Mr. Desmond
 and Mrs. Martha Robinson
 Mr. James Robinson
 Mr. Patrick Robinson
 Ms. Elizabeth Rodrigues
 Mr. William Rohan
 Ms. Rene Romano
 Ms. Anna Rooney
 Mr. Raul Rosales
 Mrs. Tamara
 and Mr. Douglas Roselius
 Roxbury Women's Club
 Mr. Joseph J. Russo
 Mr. Lawrence Salvatore
 Mr. Jason Sammarco
 Mr. Raymond Santhouse
 Mr. Jared Santisi

Ms. Danielle Satter
 Mrs. Virginia Savell
 Mr. Leonard and Ms. Rosalie Scara
 Mr. Donald and Mrs. Carol Schautz
 Mr. Eric Scheonfeld
 Mr. Michael Schneider
 Ms. Megan Schoeps
 Ms. Nancy Schultz
 Ms. Amanda Schwartz
 Mr. Richard Schwarz
 and Ms. Joanne Collins
 Mr. Orlando Setola
 Mr. Mike Shannon
 Ms. Stacy Sharpe
 Ms. Erica Sherman
 Mr. Stephen Shyne and Mrs. Mary
 Ellen O'Connor Shyne
 Dr. Donald and Dr. Lynn Siebert
 Ms. Anna Simansky
 Dr. Bette Simmons
 and Mr. Tyrone McCollough
 Ms. Maria T Simoff
 Mr. and Mrs. Dennis J. Skorewicz
 Sky Charitable Foundation
 Mr. Robert Smethurst
 Mr. Robert Smith
 Mr. Eric Solotoff
 Ms. Leslie Sommers
 Ms. Jennifer Sporl
 St. Mark's Church in Mendham
 Ms. Ann Stallard
 Mr. Doug
 and Mrs. Catherine Stephens
 Mr. David A. Stern
 Mr. David Stern
 Ms. Irene Stolarz
 Mr. Scott Strickland
 Suburbanities of Morris Area
 Mr. and Mrs. Joseph Sunshine
 Ms. Dorothy Susser
 Ms. Barbara Sydow
 Ms. Rachel Tamburri
 Ms. Jennifer Tanis
 TataBob Charitable Foundation
 Ms. Jane Thistlethwaite
 Ms. Natalie Thompson
 Thrivent
 Ms. Joan M. Thuebel
 Mr. Michael P. Tippner
 Ms. Sharon Tonetta

Mr. Joseph Topper
 Mr. Ron Torlucci
 Mr. Richard Trenk
 Mrs. Mindy Turner
 Mr. William and Mrs. Annette Tyler
 Mr. Jason Tyrpak
 United Way of
 Southwestern Pennsylvania
 United Way Suncoast
 Ms. Elizabeth Uptegrove
 Mr. and Mrs. Vincent P. Ursino, Sr.
 Ms. Michelle Vallee
 Ms. Diane Van Doren
 Ms. Alain Van Loo
 Ms. Lisa Vanderhoof
 Ms. Sharon Varnelas
 Ms. Ilona Veach
 Ms. Anabela Vendas
 Ms. Kristina Von Esch
 Ms. Rachel Vorchheimer
 Mr. Patrick Vowles
 Ms. Sheryl Waldorf
 Ms. Niti Walia
 Mr. Thomas Walsh
 Ms. Mary Walsh
 Ms. Donna Wantz
 Mr. Matthew Warren
 Ms. Su Wash
 Mr. Alvin Weiss
 Ms. Anna Weiss
 Mr. Christopher Wells
 Mr. Matthew Wikler
 Ms. Diane Williams
 Ms. Bernadine Wilson
 Mr. and Mrs. William M. Wilt
 Ms. Linda Wint
 Ms. Jennifer Wishna
 Ms. Teri Wohld
 Ms. Lindsey Wojtowicz
 Ms. Laverne R. Wolfanger
 Mr. and Mrs. Peter Wolfson
 Mr. and Mrs. Richard C. Wolter
 Ms. Stephanie Woomer
 Mr. Kurt Wulfekuhler
 Mr. Frank Zambrelli
 Ms. Llyra Zborovan
 Ms. Joey L. Zeltner
 Mr. Salvatore Zurzolo



P.O. Box 1437, Morristown, NJ 07962



Are you interested in learning more about JBWS' mission to end domestic violence?

Then consider joining our newsletter and email list!

In addition to receiving our monthly newsletter, you'll get invitations to special events and be the first to learn about all the happenings at JBWS.



Scan the QR code to sign up or visit jbws.org/connect-with-us