



ANNUAL REPORT 2023

Celebrating 25 years of our
transitional living program



jbws
Safety, Support & Solutions for Abuse

BREAKING
GROUND.
BUILDING A
DREAM.



JERSEY BATTERED WOMEN'S SERVICE

Safe Journey

Issue 2
Volume 1
Summer 1999

JBWS Reaches Campaign Goal: Transitional Housing to Open Soon

JBWS Services

- Emergency Shelter
- Victim Counseling
- Children's Services
- Legal Advocacy
- Abuser Counseling
- Community Education
- Dating Violence Prevention
- Volunteer Program

The Jersey Battered Women's Service (JBWS) recently hosted a private victory reception to celebrate the successful completion of its building campaign for the Carol G. Simon House, a Transitional Living Resource Center for victims of domestic violence.

The all-inclusive campaign raised more than \$6.4 million to support construction, an endowment, and on-going agency operations.

"We've had a tremendous outpouring of support, which says a lot about the concern and caring of our community," said Ann Probert, who along with her husband, Ted, served as volunteer co-chairs for the project. We are thrilled with the response to this project and our campaign. No gift was too small...each contribution brought us closer to our goal.

The May 10 event at Chubb World Headquarters in Warren, NJ recognized the major benefactors responsible for donating the funds to launch the new facility. The project began several years ago as the vision of the late Carol G. Simon of Morris County, wife of former U.S. Treasury Secretary William E. Simon. Mrs. Simon contributed a \$1 million endowment toward the program.

Only Facility of Its Kind in the State
The 28,000 square foot facility, designed by Nalaskay and Kopelson Architects and Diane Boyer Interiors, A Division of The Behle Group, is scheduled for completion this summer. It will include 11 apartments ranging in size from one to three bedrooms, as well as counseling offices, a computer room, community center, library conference room, reading room, training classroom, children's program room, children's playground, and a garden. Facilities and programs will be available to both resident and non-resident clients.

The Carol G. Simon House project is the only one of its kind in New Jersey. The model program is expected to help rebuild the lives of 1,200 battered women and their children each year.

Simon Family Attends Reception
Attending the victory reception were three of the Simon children, Leigh, Aimee and Peter. In her address to the major benefactors, Leigh Porges Simon said, "Although my mother played an important role in the completion of this project, it is so wonderful to be standing among the people whose support, hard work and faith in this mission made it a reality." She continued, "Today we are rejoicing in the courage of many women who are given an opportunity to put their lives together again. We all know that our future is only as strong as our families."

Leigh Simon Porges, Stacy and Will Burke and JBWS board member Elaine Badger (pictured from left) celebrate the completion of the fund raising campaign to build the Carol G. Simon House. The private victory celebration for major benefactors was held at Chubb World Headquarters on May 10.

JBWS is a private, confidential service that welcomes ALL survivors of dating, domestic, or partner abuse (and their family members) regardless of severity of the abuse, marital status, income, gender identity, sexual orientation, religion, or ethnicity.

Our Mission is the prevention of domestic violence through the protection and empowerment of the victim, the rehabilitation of family members, the advocacy for social reform to prevent partner violence, and the education of the public about domestic violence and its consequences.

Our Vision is to create a community-wide culture that does not tolerate the presence of any form of family or partner violence... a culture that holds people who use abuse accountable for their actions and victims blameless for their victimization... and a culture that works purposefully to foster healthy relationships, teaching all children the importance of mutual respect between partners.

Board of Directors

PRESIDENT AND CEO
Diane M. Williams

CHAIR:
Kelley Kurtzman
Verizon (Retired)

VICE CHAIR:
Jamie Molchan
Ernst & Young LLP

TREASURER:
Rita Karachun
Merck & Co., Inc.

SECRETARY:
Valerie O. Murray
Beacon Trust Company

Noel Briordy
Crum & Forster

Chris Connors
Bristol Meyers
Squibb (Retired)

Erica DeMarco
The Siegfried Group

Latoya Edwards
VISA

Lindsay Friedman
Barclays

Dr. Danielle Graddick
Clinical Psychologist

Peter Hernandez

Patrick Higgins
Pricewaterhouse-Coopers

Kerry Howe
Spotify

Patricia O'Rourke
Tiffany & Co.

Samantha Rocco
Einhorn, Barbarito,
Frost & Botwinick

Jeffrey L. Simon
Deloitte, LLC (Retired)

Dr. Heather Stewart Pyne
NYU (Retired)

Juan Trillo
Co/Action Speciality
Insurance Group

April Wirtz
Accenture Strategy

Christine Zeikel
Deloitte, LLC

Advisory Council

Britt Byers
Dr. Dawn Gabriel

James Gerace
Mirian Graddick-Weir
Helen Hallberg

Aru Kulkarni
Patricia A. Lee
Judy O'Hagan

Laurie Peter, MSW

Chris Reidy
Grace Shin

Anthony Slimowicz
Brooke Wiener

Gretchen Wilcox
Amy Wiwi
Jeffrey Wolfanger



Looking back on 2023

TABLE OF CONTENTS

6-7
Reflecting
on 2023

8-9
What is the
Shelter Crisis?
And How is JBWS Helping?

10-11
Celebrating
25 Years of
Transitional Living

12-13
Services that
Support the
Whole Person

14-15
A Story of
Collaboration

15
Making
Information
About Abuse
Accessible

16-18
Safety,
Support &
Solutions

19
Preventing
Abuse at
its Source

20-21
How Special
Events Support
JBWS' Mission

22
Fulfilling Client
Needs Through the
Holiday Project

23
What We Can
Learn From
Current Events

24
How Domestic
Violence
Intersects With...

25
Financials

26-27
Legacy Society

28-44
Donors



Reflecting on 2023

Throughout the past year, we noted a concerning and continuous increase in the need for housing and supportive services among our clients. 2023 was marked by a pervasive crisis that greatly impacted JBWS and other domestic violence agencies across New Jersey. (See page 8)

Because of JBWS' extensive options for housing services, we were able to abate the effects of the shelter crisis on our clients. In addition to an Emergency Safe House Shelter, known as Arbour House, JBWS has a Community Housing Assistance Program, a Rapid Rehousing Program, and a transitional living program. (See page 9) JBWS has been aware of the growing need to expand our residential services since the 1990s. In fact, 2023 marked the 25th anniversary of breaking ground on the Carol G. Simon House: A Transitional Living Resource facility that houses our transitional living program. (See page 10)

It is in our residential facilities that survivors are given the time and space to develop vital skills to rebuild their lives.

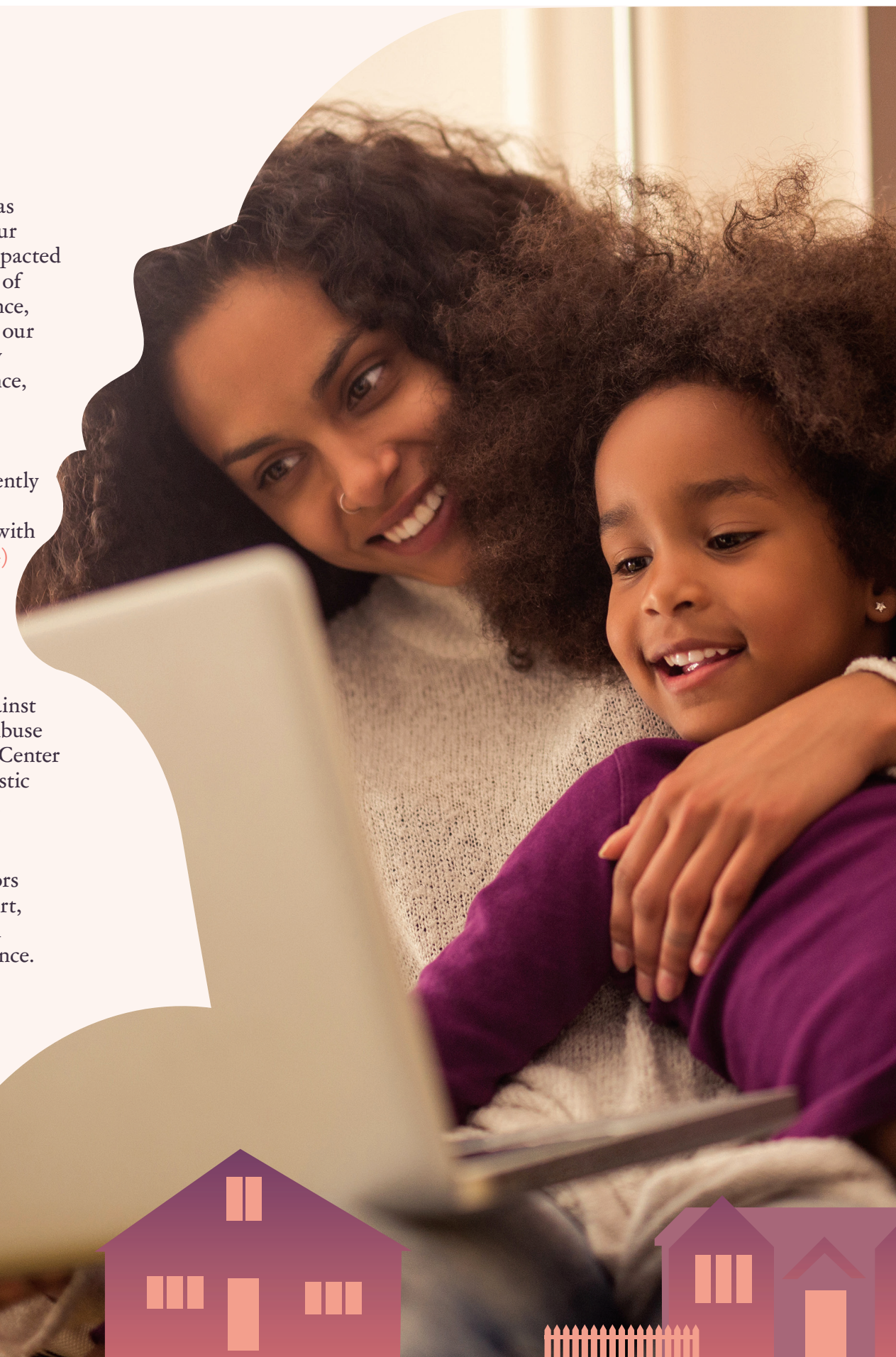
We support survivors in all aspects of their life offering them the chance to build their financial wellness, improve their literacy, reduce food insecurity, and ease barriers to independence. (See page 12)

As this Annual Report demonstrates, 2023 was a year of rising to meet the diverse needs of our clients. Determined to ensure that anyone impacted by abuse has access to information regardless of whether they're ready to reach out for assistance, we vastly increased the amount of content on our website. All those impacted by abuse can now find information regarding the cycle of violence, power and control wheels, safety planning, legal information, and more. (See page 15)

Understanding that abuse may present differently within certain communities, JBWS created a web page that explores how abuse intersects with numerous different populations. (See page 24)

Throughout this report, you will read stories from people who have benefitted from our programs. We have included both stories of survivors of domestic violence (See page 14) and a story from a person who used abuse against his partner. This man is a participant in the Abuse Ceases Today program, run by JBWS' Jersey Center for Non-Violence. (See page 19) To end domestic violence, we must first address the root cause.

Thank you to our generous donors, staff, and volunteers for your role in supporting survivors of abuse. As you read this year's Annual Report, we hope you recognize how pivotal you are in helping JBWS' mission to end domestic violence.



JBWS was recently recognized by Charity Navigator and GuideStar, two organizations that evaluate nonprofit agencies. JBWS received the highest (4-star) rating for nine consecutive years by Charity Navigator. Similarly, JBWS is rated at the highest level (platinum) by GuideStar.

Charity
Navigator



FOUR-STAR

Platinum
Transparency
2023

Candid.



What is the Shelter Crisis?

After the COVID-19 pandemic, shelters across New Jersey began to see an increase in the need for emergency housing for survivors of domestic violence. Prior to 2020, if shelters were full, then survivors of abuse could find placement in other counties' shelters. However, this wasn't an option in 2023 because every other shelter in the state was also at capacity.

Why? Because a greater number of people are entering shelter and staying for longer periods of time because they're having difficulty finding reasonably priced housing. The lack of affordable housing

and looming cuts to funding for residential services has contributed to a bottleneck in New Jersey domestic violence shelters.

When a survivor leaves an abusive relationship, they often require time to rebuild their lives. As a result of the abuse they endured, they may have no income, savings, educational degrees, or work experience. Without residential services, survivors of violence could be forced to make an impossible choice - enter into homelessness and face unknown danger or remain in their abusive relationship where the danger is familiar.



JBWS staff members attend Project Homeless Connection to share resources for assistance



“Imagine a survivor working up the courage to leave their partner over the course of several months or even years and then being told ‘we don’t have any space for you.’ We couldn’t let that happen.”

- Diane Williams, President & CEO of JBWS

The Chester Lionesses volunteer at Simon House

How does JBWS' Housing Services Help with the Shelter Crisis?

JBWS offers many housing services that are designed to help survivors of domestic violence regain control of their lives. These services give survivors extra time to find safe housing, improve their credit score, secure sustainable employment, earn a degree, or develop other vocational skills.



Quilt made by former survivors in JBWS' shelter

MORE THAN
80%

of mothers with children who are currently experiencing homelessness have endured domestic abuse

(According to the Office of Family Violence and Prevention Services).

Arbour House, JBWS' Emergency Safe House Shelter:

When a survivor leaves an abusive relationship and is urgently in need of housing, they come to Arbour House. Both single adults and adults with their children stay in private bedrooms but share the living room and kitchen areas with other families.

The Carol G. Simon House: A Transitional Living Resource Center:

When the stay at JBWS' Arbour House is not long enough to overcome the obstacles of abuse, the Carol G. Simon Transitional Living Resource Center (TLRC) is the next step. (Learn more on page 10)

Community Housing Assistance Program (CHA):

CHA is flexible funding that supports survivors in achieving or maintaining secure housing. Unlike most other funding sources, there is no set list of what will be funded, and survivors are encouraged to ask for whatever will make the most difference to maintaining their housing situation and their lives. This includes moving expenses, car repairs, help with utilities, and more.

Rapid Re-Housing Program (RRH):

Founded in 2019, this program has been instrumental in helping survivors secure and sustain permanent housing in the community. RRH helps survivors search for housing, pays a portion of the rental amount for up to 12 months, provides financial assistance for medical, educational, childcare, transportation needs, and more.

Did you know?

Over 225,000 nights
of shelter provided to survivors
and their children in 25 years

Celebrating 25 Years of Transitional Living

In the 1990s, JBWS recognized the need for more comprehensive housing services for people victimized by abuse. While JBWS' Emergency Safe House Shelter had already been renovated to accommodate more survivors, it was not enough to meet the need for residential services. To address this need, JBWS conceptualized an innovative plan — the construction of a Transitional Living Resource Center. This would allow JBWS to expand our housing services beyond the traditional two- three month stay for emergency shelter.



It also features a state-of-the-art wellness room, children's recreational room, laundry facilities, an industrial kitchen, playground, private meeting rooms, and so much more.

However, what helps people victimized by abuse move toward self-sufficiency and lasting safety is the comprehensive, supportive services offered within Simon House. People victimized by abuse receive counseling, case management, vocational training, life skills development, financial literacy workshops, parental education classes, and more to help move beyond abuse. (Learn more about these services on Page 12.)

"Too often, the [victim] ends up returning to their [abusive partner] because they can't find affordable, adequate housing or lacks long-term financial and emotional support," said the late Carol G. Simon, a former member of JBWS' board of directors who donated a one-million-dollar endowment toward the project. **"I wanted to close this gap and transitional housing services give people more time and counseling to put their lives back in order."**

On June 8, 1998, JBWS officially broke ground on the Carol G. Simon House: A Transitional Living Resource Center (Simon House). Located on more than two acres of land in Morris County, Simon House is a 28,000 square foot facility comprised of 11 fully furnished apartments that range in size from one to three bedrooms where people victimized by abuse can live for up to two years.



► Newspaper
feature,
Wednesday,
June 10, 1998

Thank You to the Simon Foundation

The Simon Foundation played a crucial role in the development of Simon House. In the mid 1990s, Carol G. Simon donated a \$1,000,000 gift to establish an endowment and kick off the campaign for the creation of Simon House and to fund our transitional living program. Since then, the William E. Simon Foundation has been providing annual support for our transitional living program. While their foundation sunsetted in 2023, their last gifts continue to fill the gap between emergency shelter and self-sufficiency for survivors living in the community.

Simon Family
with JBWS'
President,
Diane Williams



Services that Support the Whole Person

The effects of abuse on a survivor's life do not immediately disappear once they leave their relationship. Their partner may have destroyed their credit, prevented them from learning how to speak English, or complicated their relationship with their children. To adequately support survivors of domestic violence, JBWS offers numerous wraparound services through partnerships with other entities.



Building Financial Wellness

Since financial abuse occurs in 99% of all abusive relationships, many victims of domestic violence need guidance when it comes to their finances. Through partnerships with NORWESCAP and PricewaterhouseCoopers, survivors can attend financial workshops and one-on-one financial coaching where they learn about tax filings, budgets, savings, repairing credit scores, and more.



Strengthening Families

Survivors and their children may struggle to connect with each other after living through abuse. To strengthen family connections, develop healthy communication styles, and build strong bonds between family members, JBWS implemented the Family Enrichment program for survivors in our residential programs.



Improving Literacy

If survivors of domestic violence are unable to read, write, or speak English, then it may complicate their ability to be self-sufficient. Through the Literacy Volunteers of Morris County, survivors have access to tutoring in basic literacy, English as a Second Language (ESL), and GED tutoring.

How Do These Services Benefit Survivors of Abuse?

Daniela and her children came to JBWS with nothing more than the clothes on their backs. Daniela was unable to speak English, had very little experience with managing her own finances, had no ability to drive, and was struggling to cope with the abuse she endured. After spending more than two months at JBWS' Emergency Safe House Shelter, Daniela and her children entered the Carol G. Simon House: A Transitional Living Resource Center.

While at Simon House, Daniela was able to learn English by diligently working with the Literacy Volunteers of Morris County.

Learning English allowed Daniela to secure stable employment that she wouldn't have had access to otherwise. She also attended financial literacy workshops offered by NORWESCAP

that taught her how to budget effectively, improve her credit score, and file taxes properly. This knowledge enabled Daniela to start building a savings account.

In addition to financial wellness and literacy services, Daniela attended counseling to work through complicated feelings toward her husband, received support for her children, and got assistance in filing for divorce. After two years at Simon House, Daniela was able to exit the program with a strong understanding of English, a driver's license, a vehicle she bought herself, a stable job, and a savings account.

None of this would have been possible without the supportive services and time afforded to her through JBWS residential services.



Offering Comfort

Several times a year, Creature Comfort comes to JBWS' residential facilities to offer pet therapy. Spending some time with these animals offers our survivors a chance to relax.



Reducing Food Insecurity

Many survivors of abuse arrive at our shelter with very little. To ensure that they always have enough food to feed themselves and their families, we keep our pantries stocked. In 2023, we formed a relationship with the Community Food Bank of New Jersey to better provide for our survivors.



Supporting Material Needs

Every other month, survivors of domestic violence who utilize our services can attend our Donation Distribution Day to receive everything from kitchenware, children's toys, and clothing to school supplies, toiletries, feminine hygiene products, and more.

A Story of Collaboration

As Evy approached the door to JBWS' Morris Family Justice Center (MFJC), she was filled with fear and doubt. Questions were racing through her mind:

"Was she doing the right thing?"
"Will this place even be able to help?"
"What is the future going to look like now?"

Before Evy could even ring the doorbell to gain entrance into the MFJC, a staff member walked up behind her and asked if she needed help. Despite her hesitation, Evy disclosed that she had come to the MFJC to talk to someone about her relationship.

As she spoke with the staff

member, Evy's eyes welled with tears. She couldn't understand what her life had become.

Upon reviewing the power and control wheel, Evy began to identify the ways abuse presented in her relationship. She decided that she wanted to obtain a Temporary Restraining Order, even if she was fearful about what may happen in the future. A member of the Sheriff's Office arrived at the Morris Family Justice Center to take her restraining order application. As they waited for a judge to hear Evy's complaint, the officer shared his personal experience with domestic violence as a child. The officer's vulnerability alleviated some of Evy's concerns about filing a restraining order.

As Evy walked toward the room where the judge was waiting to hear her case, the MFJC staff were right by her side. Their presence made Evy feel as comfortable as she possibly could in a difficult situation. Within thirty minutes, Evy was granted a Temporary Restraining Order.

Unfortunately, she began to panic because her child arrived home from school earlier than expected. This meant that her child was alone at home with her partner. Evy did not want her child to see their father taken out of the home by law enforcement officers. To rectify this, the Sheriff's Officer's Supervisor immediately connected with Evy's home municipality to orchestrate a plan. Evy was going to pick up her child, let the officers know when they left, and then officers from the local municipality, who had set up a few blocks from the home, would serve Evy's husband.

"What happened that day was a formal collaboration between partners, and personal connections to further support Evy's safety,"

says Maria Lagattuta, director of JBWS' Morris Family Justice Center. "We know that a law enforcement officer showed up with vulnerability to connect with this woman who was both scared and in pain. And we believe she left with a little more hope than what she walked in with."

Making Information About Abuse Accessible

52,000 users are estimated to have accessed JBWS.org in 2023. Upon noticing the sheer number of people who were visiting our website, we recognized the need to increase the amount of information that was available about domestic violence. We wanted to ensure that every single person looking for assistance, regardless of where they are on their journey to safety, has access to resources that may help.

We created the "Helpful Information About Domestic Violence" page that contains general information about abuse, the cycle of violence, power and control wheels, safety planning, restraining orders, legal information, and the effect of domestic violence on children. It is our hope that these resources will serve as a foundation for people experiencing victimization to reach out to either JBWS or their local domestic violence agency for help.

Scan the QR code to learn more. ▶



SAFETY

52 adults and children

stayed for a total of 10,678 days at the Carol G. Simon House: A Transitional Living Resource Center (also known as Simon House).

295 adults and children

found protection for a total of 13,660 days in Arbour House, JBWS' Emergency Safe House Shelter.

4,685 helpline calls

were made to JBWS' 24-Hour Helpline where people needing confidential assistance received information, counseling, and referrals.

1,143 people received

critical legal advocacy services. This includes supportive and crisis counseling, legal options, safety planning, advocacy, and referrals.

940 interventions

were conducted by Crisis Response Team volunteers at local police stations and hospitals.

SUPPORT

The Gift of a Safe Ride

On a morning stroll, Ted came across an intersection where he struck up a conversation with a sleepy looking crossing guard.

When asked about her level of exhaustion, the crossing guard explained that she was a member of JBWS' Crisis Response Team (CRT) and was called to a police station in the middle of the night. She said that members of the CRT program are dispatched 24/7 to hospitals and police stations to provide support to victims of domestic violence.

Ted was so moved by the work of the Crisis Response Team and the dedication of the CRT volunteers that he knew he had to get involved. Unable to become a CRT himself for personal reasons, Ted began funding the emergent needs of the CRT program. He donated several hundred dollars' worth of Uber gift cards to ensure that our clients always had a safe ride from the police station or could make it to court without any additional anxiety.

Tragically, Ted passed away suddenly this year but continues to support JBWS in a trust left for the CRT program. We will never forget his warmth, compassion, and kindness!

In these critical moments, people hurting from abuse are given resources about safety planning, restraining orders, and all of JBWS' services.

599

adults received

comprehensive services from multiple agencies within the Morris Family Justice Center (MFJC).

239

people received

counseling and supportive services through the Jersey Center for Non-Violence to learn alternatives to using force and abuse in their relationships.

440

survivors received

counseling through the adult counseling services.

“We are meeting people at the worst moments of their lives. If we don't have someone on the other side of the phone, *answering calls for help*, I think we would lose way too many people.”

- JBWS Staff Member



SOLUTIONS

20 families established housing in the community

and received comprehensive supportive services through the Rapid Rehousing Program. This program provides survivors with a quick transition from emergency shelter to rental housing in the community by providing rental assistance for up to one year, along with case management and support.

825 people learned about domestic abuse through JBWS' professional training program

Every year, JBWS' Dating Abuse Prevention Program holds a conference for teenagers to talk about healthy relationships. Students from all over New Jersey came together in 2023 for a one-day leadership conference to discuss how we all can prevent dating abuse.

"I thought it was very eye-opening to listen to the keynote speaker's experience. I feel as though we are often not exposed to real stories about dating abuse and base our knowledge on hypothetical situations and scenarios," says one student in attendance. "Listening to her story revealed a lot more to me and I was inspired by her strength and bravery."

- Teenager in attendance at the Annual Teens for Healthy Relationships Conference

Teens for Healthy Relationships Conference

12,451

teens learned the warning signs of dating abuse

and resources for help during 278 presentations, including a youth leadership conference, through JBWS' Dating Abuse Prevention Program.

68

people received emergency aid through the Community Housing Assistance program

covering rental assistance, car insurance, car repairs, utility assistance, household items, and more. Funded by the Victims of Crime Act, this program provided emergency assistance to JBWS participants in need.

Preventing Abuse at its Source

Jamal was only a child when he first saw an incident of abuse occur between his parents.

Throughout his childhood, Jamal routinely witnessed both verbal and physical abuse. Growing up in an abusive household caused Jamal to mimic these behaviors in his own relationships.

After an incident of domestic abuse, Jamal was referred to JBWS' Abuse Ceases Today (A.C.T.) program by the Department of Child Protection and Permanency. The A.C.T. program is a 26-session group counseling initiative designed for men. It teaches men who have caused harm in their relationships to examine belief systems, develop healthy communication skills, learn to manage disagreements, cope with strong emotions, and understand how domestic

abuse impacts children. At first, Jamal struggled to reflect on his own use of abuse. While he recognized that his behavior was inexcusable, he expressed blame toward his partner when talking about the incident of abuse. However, as the weeks progressed and Jamal began to actively engage in conversation with his peers, his attitude began to change.

Jamal started to acknowledge his use of power and control, particularly regarding his child. He realized that his own childhood experiences of abuse impacted his learned behaviors. Concerned for how his actions may one day influence his child, Jamal

completely committed himself to the A.C.T. program. He continued to reflect on his own experiences, showed genuine support for other members in the group, and even assumed a leadership role.

Near the end of his time in group, Jamal realized that his abusive behavior had impacted his ability to both listen and communicate with his family. He recognized that he had adopted an aggressive parenting style because that's what he experienced as a child. Motivated to have a close relationship with his family, Jamal has implemented what he's learned in the A.C.T. program to make positive changes in his family.

"I wish I knew about the A.C.T. program sooner.

It would have been an effective tool when I was younger," says Jamal. "The information we learn here would be helpful for everyone to know."

If you recognize any abusive or controlling behaviors in yourself, then JBWS can help: jbws.org/jcnv or 973-539-7801

SPECIAL EVENTS

How Special Events Support JBWS' Mission

JBWS continuously meets the needs of our clients because of the funds raised at our special events. The generosity of our donors allows us to expand our programs and improve upon our services.

The best chefs and beverage purveyors in the tri-state area provided delicious food and drinks for attendees at Grand Tastings.

In 2023, JBWS hosted several successful events that **RAISED OVER \$1.2 MILLION**

Held at the iconic Somerset Hills Country Club, attendees of the 24th Annual Verizon Hope Classic played golf and participated in a pickleball tournament.



The Half Marathon for Hope brought JBWS supporters out in droves to raise money to support our mission of ending domestic violence.



A vibrant Mardi Gras theme, signature cocktails, and fantastic auction prizes awaited attendees at the 11th Annual Autumn Auction for Hope.



Learn more about JBWS' special events here:



Two pickleball competitors smile amidst the competition.



Fulfilling Client Needs Through the Holiday Project

The holidays can be challenging, especially if your family is impacted by domestic violence. For some, this was their first time celebrating the holiday season in shelter. They are away from their homes, their individual traditions, and any sense of familiarity. For others, the financial abuse they endured in their relationship doesn't allow them to purchase presents for their children. They may have been forbidden to work, harassed at their place of employment, sabotaged from advancing their career, or have had their abusive partner controlling their finances.

Recognizing the complex needs of our clients, JBWS is committed to supporting them beyond

crisis services alone. Our Holiday Project is intended to restore a sense of normalcy to people victimized by abuse. Our Thanksgiving distribution puts a delicious meal on their tables, our Holiday Boutique allows clients to pick out presents for themselves and their children entirely free of cost, and our Adopt-A-Family program fulfills holiday wish lists for families impacted by abuse.



Record Breaking Number of Clients Served

655 clients

served through Holiday Boutique

247 clients

supported through Adopt-A-Family

245 clients

received Thanksgiving assistance

930 volunteer hours

recorded

“The sense of love and care I experience every time I visit is a testament to the incredible impact JBWS has had on our lives...The gift cards, financial assistance, and holiday provisions ensure that families like mine can still create special moments for our children, despite economic challenges. Your dedication to helping others shines through, and I am truly blessed to be a recipient of your generosity.”

– Survivor, Holiday Boutique



Scan the QR code to learn more about JBWS' Holiday Project



What We Can Learn From Current Events

Throughout 2023, there were a series of events that placed domestic violence and controlling behaviors at the forefront of popular discussion. To correct any assumptions about abuse, JBWS made a point to contribute our voice to that conversation.

Jonah Hill's Alleged Text Messages: Are They Boundaries?

In the summer of 2023, Sarah Brady released a series of alleged text messages between herself and her former boyfriend, Jonah Hill. The text messages were filled with guidelines for how Brady was supposed to act to be in a relationship with Hill. This prompted the question - What is a boundary and what is control? JBWS professionals answer that question.

How Joking About Abuse Hurts Victims of Domestic Violence

“Why are you so sensitive?” “It's just a joke, it isn't hurting anyone.” When the subject of insensitive jokes arise, these types of comments flood social media. However, are jokes harmless? In 2023, the comedian Matt Rife made a joke about domestic violence that implied that the victim was at fault for the abuse they endured. We believe that these jokes do cause harm.

What is Machismo?

Machismo refers to an overly exaggerated way of being a man and of viewing masculinity in Hispanic or Latinx cultures. It's the belief that if you're the man of the house, then you hold the power and you're the one to put others in their place. Unfortunately, this could potentially lead to some controlling or harmful behaviors.



Find articles like these and more at jbws.org/news-page

How Domestic Violence Intersects With....

Did you know that people with disabilities are 3x more likely to experience violence than someone without a disability? Or that 76% of all domestic violence homicide victims had also been stalked in the year before their murder?

Within every community, there are unique ways in which domestic violence may present and each population may face different barriers to seeking assistance. This year, JBWS made a concerted effort to highlight how abuse may present in numerous different communities to reduce barriers to seeking assistance. It is our hope that these pages can ensure that ALL people feel comfortable reaching out to JBWS for help.



Scan the QR Code to learn more

REVENUE

EXPENSES

Personnel	4,012,607	64%
Operating	1,986,856	32%
Depreciation	283,993	4%
TOTAL	6,283,456	100%

CONTRIBUTIONS

Individuals and Business	813,970	
Fundraising	1,125,474	
Total	1,939,444	25%
Government	3,000,435	39%
Employee Retention Credit	1,104,188	15%
Foundations	610,708	8%
Operating Income	6,654,775	
Investment Income	976,032	13%
TOTAL INCOME	7,630,807	100%

EXPENSES BY PROGRAM

Arbour House and Children's Services	1,516,401	24%
Simon House and Vocational Services	556,388	9%
Community Education and Prevention	127,877	2%
Center for Counseling & Advocacy	763,603	12%
Jersey Center for Non-Violence	408,662	6%
Family Justice Center	388,582	6%
Community Housing & Assistance	542,953	9%
Administration	1,118,623	18%
Fundraising	860,367	14%
TOTAL	6,283,456	100%



The Legacy Society

"It is frightening to think about survivors of abuse not having access to all the services JBWS provides," says Robin Hughes, manager of JBWS' Crisis Response Team.

With the dramatic increase in the number of survivors and their children seeking services from JBWS this year, investing in our future has never been more important.

Members of the legacy society are the reason that we can always meet the unique needs of our clients. With their support, JBWS expanded residential services and continues to ensure we never miss a first call from a survivor on our 24-Hour Helpline. Thanks to these members, JBWS is at the police department moments after abuse is reported, offering survivors critical access to resources.

Because of our legacy society members, JBWS is by our survivors' side as they face their partners who have used abuse in court. They have helped us prevent domestic violence at its source by allowing us to invest in community education and abuse intervention programs.

Simply put, we couldn't have done this work without you. Just as important as the work that has been accomplished is the planning for the enormity of the work that still needs to be done. Your help and support are critical to the future of JBWS. Together we can ensure another nearly 50 years of service to our clients.

Thank you to the following partners that have already made Legacy gifts to JBWS or have included JBWS in their plans:

Anonymous
Ms. DiAnne Arbour
Mr. James M. Bergen
Ms. Linda Grandis Blatt
Ms. June E. Briant
Mr. Felix Braun

Mr. Robert B. Callahan
Mr. Edward M. Doda
Dr. Dawn Gabriel
Ms. Maria M. Hale
Mr. Jon and Mrs. Janet Harrington
Ms. Barbara Ridder Irwin
Ms. Dorothy H. Irwin
Mrs. Leokadia Sardi Jensen
Ms. Mary Kufta
Ms. Patricia Lee
Ms. Mary J. Mooney
Ms. Eleanore Moore
Ms. Virginia H. Pace
Mr. Philip Pagano
Ms. Dorothy J. Parker

Mr. Fred W. Radel
The Children of Carol G. Simon
The William E. Simon Foundation
Mrs. Anne Singleton
Ms. Margaret Stone
Ms. Claire Sullivan
Ms. Maureen Thompson
Mrs. Barbara Dydek Tomlinson
Mr. Norman B. Tomlinson, Jr.
The Tomlinson Family Foundation
Mrs. Gretchen S. Wilcox
Ms. Lucia G. Worley

Become a Member of our Legacy Society

After providing for your family and loved ones, you may want to remember JBWS in your estate plans. A bequest, annuity, or trust will help to assure the long-term future of the work of the agency. If you are interested in leaving a legacy to JBWS, or would like a copy of our Legacy brochure, please contact Helen Le Frois, Vice President of Development, at hlefrois@jbws.org. We'd love to hear from you if you have already included JBWS in your plans. Thank you!

An example of specific bequest language:

"I give, devise, and bequeath the sum of \$_____ to Jersey Battered Women's Service Inc."
Deviation from this basic language, such as

imposing conditions on the gift, may cause your estate to lose valuable estate tax charitable deductions.

Thank you

The sheer amount of community support we receive at JBWS is inspiring. Thank you to everyone who donated presents during our holiday drives, raised money for our programs, gathered necessary supplies, and helped support JBWS' mission.

Scan the QR code to donate ►



THANK YOU TO OUR
DONORS

THANK YOU TO OUR
DONORS

Benefactors (\$50,000+)

Anonymous
County of Morris
Ellman Discovery Foundation
Emergency Food and Shelter Program
National Board
F. M. Kirby Foundation, Inc.
HISVISION Inc.
State of New Jersey

The Lee-DeSimone Family Fund
United States Department of Housing and
Urban Development
United States Department of Justice
United States Government ERC Funds
Verizon
William E. Simon Foundation

Patrons (\$25,000+)

Accenture
ADP Foundation
Anonymous
Fisch Family Fund
Good Morning World Fund
Harris Coy Foundation Trust
Juniper Networks
Margaret A. Darrin Charitable Trust

McElroy Family Foundation
Merck & Company
Mimi Washington Starrett Foundation
PricewaterhouseCoopers
Charitable Foundation
PricewaterhouseCoopers LLP
Silver Lining Family Fund

Sponsors (\$10,000+)

Acrow Corporation of America
Anonymous
Becton, Dickinson & Co.
Brian & Mary Murphy Family Foundation Inc.
Catholic Human Services Foundation
Crum & Forster
Mrs. Kellie Doucette and Mr. John Doucette
FirstEnergy Foundation
Mr. and Mrs. James Gerace
Mr. Patrick and Mrs. Molly Higgins
Mrs. Kerry Howe and Mr. Sean Howe
Hyde and Watson Foundation
IOLTA Fund of the Bar of New Jersey
JKS Charitable Fund
Ms. Rita A. Karachun

Ms. Patricia Lee
Maron Marvel Bradley Anderson & Tardy LLC
Dr. and Mrs. Mark McBride
Novartis Corporation
The O'Hagan Family Fund
O'Reilly Family Fund
Robert & Joan Dircks Foundation
Mr. and Ms. John F. Ruffle
Shar-Ted Furniture Associates
The Gloria Foundation, Inc.
The William L. Gibson Fund
Thomas and Annette Dircks Family Foundation
Tiffany & Co.
Mrs. Brooke Wiener
Wyndham Hotels & Resorts

Donors (\$5,000+)

AAA Northeast
Andrew & Andrea Lupo FFCG
Anonymous
Anywhere Gives
Barclays
Beacon Trust Company
Berkley One
Betsy J. Bernard and Laurie J. Peter
Giving Fund
Brown Brothers Harriman
Carisk Partners
Cynthia L Sullivan-Goldenberg
Charitable Fund
Deloitte & Touche LLP
Ditcheck Family Trust
Ms. Theresa Doyle
Emerson Charitable Trust
Enterprise Holdings Foundation
Ernst & Young Foundation
Galloway, Johnson, Tompkins, Burr & Smith
Mr. Peter Hernandez
Karen Stirling Family Foundation
Kennedys CMK, LLP
Ms. Cindy Knapp
KPMG LLP

Mrs. Kelley Kurtzman
Mrs. Helen Le Frois and Mr. Gregory Le Frois
Ms. Bettie LeFebvre
Ms. Donna Lyden
Ms. Fran Mareiniss
Mrs. Jamie Molchan
Morgan Stanley
Mr. Robert and Mrs. Maria Muller
Ms. Valerie Murray
PNC Private Bank
Reilly, McDevitt & Henrich
Mr. Don and Ms. Merryl Richards
Ms. Antoinette Segreto
Sherman Atlas
The Graddick-Weir Family Fund
The Lillian Schenck Foundation
The Paul B. Greetin and Beryl S.
Greetin Foundation
The Virginia Metzler Family
Charitable Foundation
Ms. Erica Vandell
Wind River
Mr. and Mrs. Jeffrey Wolfanger
World Wide Technology Holding Co, LLC

Supporters (\$1,000+)

Ms. Susan Albin and Mr. Michael Juliar
Mr. Scott and Ms. Jackie Alfieri
Allstate Sales Group, Inc.
AM Higley
Anonymous
Apple
Ms. Karen Arakelian
ASG
Mr. Brent and Mrs. Shari Ashton
AT&T
Mr. Jeffrey and Mrs. Leanna Bashe
Ms. Janice Bassili
Ms. Mary and Mr. Ronald Baughman
Mr. Joel Bergstein
Mr. Adam Berkowitz
Ms. Kelly Berton Rocco
Mr. Tom and Mrs. Amy Beversluis
Mr. Michael Bey
Ms. Claire M. Bianco
Mr. Andrew Bittons
Bonardi Family Fund
Mr. Gary Botwinick
Boyle Shaughnessy Law
Mr. Dan Brannen
Ms. Ellen and Dr. Peter Brody
Ms. Flora Brophy
Mr. Geoff Brzuchalski
The Honorable Anthony and Mrs. Amy Bucco
Ms. Theresa Buniak
Ms. Jeanette and Mr. Russell Burke
Mr. and Mrs. Michael Carroll
Ms. Katherine Carter
Casale Charitable Gift Fund
Cedar Crest Village, Inc
Charles Emil Thenen Foundation
Mr. Jeffrey Cohen
Coldwell Banker Realty Cares Foundation
Community Church of Mountain Lakes
Mr. and Ms. Christopher Connors
Mrs. Susana and Mr. Rodrigo Crespo
Mr. Tom Cunningham
Ms. Carolyn Daly
Ms. Marilyn Dee
Mr. Chris DelOrefice
Ms. Laura Deutch
Mr. Bob Dunn
Dunne Manning Inc.

Mrs. Ann Edattel
Ms. Latoya Edwards
Ms. Eileen Egan
Ms. Alexandra Elliott
Mr. Conor Evans
Fairleigh Dickinson University
Mr. Gerard Fehling
Ms. Katherine Fehon
Mr. Chris Flood
Mr. Gerald Flynn
Mr. Greg Flynn
Mr. Joseph and Mrs. Deborah Follett
Mr. Mike Forte
Mr. Matthew Frank
Frankel Magidson Family Fund
Ms. Lindsay Friedman
Mr. Howard Friedner
Mr. Vincent Frisina
Dr. Anthony Fusco
Dr. Dawn L. Gabriel
Ms. Leia Gaccione
Ms. Susan Gajarsky
Mr. Richard and Mrs. Mary Gallagher
Mr. John and Mrs. Allyson Gallup
Gardner Family Fund of CFNJ
George A. Ohl Jr. Trust
Ms. Faith Ginsberg
Mr. Brian Giovinazzi
Mr. and Mrs. Kevin P. Glenn
Gloria Dei Lutheran Church WELCA
Mr. Daniel Golberg
Ms. Michelle Goldman
Ms. Danielle Graddick
Mr. Stephen Gray and Ms. Kathleen Ulrich
Ms. Angela Gruber
Mr. Frederick Gruel
Ms. Samantha Guatta Rocco
Mr. Scot Hadley
Ms. Connie Hagelin
Mr. Thomas and Mrs. Suzanne Hall
Mrs. Helen E. Hallberg
Ms. Elizabeth Halstead
Ms. Samantha Hammock
Mr. Tristan Harding
Ms. Gisela Harpell
Haverford Trust Company
Ms. Kristin and Mr. Keith Hayes

Helpsy
Ms. Heidi Hemmer
Mr. Terrance Hendricks
Mr. John Hennessy
Mr. Erik Herrington
Mr. Frank Herudek
Mr. and Ms. Jeffrey B. Hill
Mr. Jonathan Hirschfeld
Ms. Linda Horn and Mr. Leonard Horn
Ms. Lynn Horowitz
Mr. Jim Huang
Mr. Glenn Hunzinger
Independent Thrift Shop
Mr. Eric Inglis and Ms. Grace Shin
Mr. and Ms. Robert J. Iracane
Isabel and David Mahalick Foundation
Ms. Michelle Jacob
Johnson & Johnson
Johnson & Johnson Matching Gift Program
Johnson Family Charitable Fund
Mr. James Johnston
Jonathan and Suzanne Glenn Family Foundation Fund
Joseph and Mary Mauriello Charitable Fund
Mrs. Alisa Kennedy
Mr. Steven and Mrs. Maria Kohutic
Ms. Lauren Krattiger
Mr. Andrew and Mrs. Elizabeth Kriegman
Mr. and Ms. Ken Lain
Ms. Laura Landy
Mrs. Junehee Lanoue
Law Offices of Kelly Berton Rocco
Long Valley Junior Women's Club
Mr. Julio Lopez
Ms. Lisa Loprete-Duthie
Ms. Sonia Luaces
Mr. Chadd and Mrs. Sasha Lucas
Ms. Kristin C. Lynch
Mr. Kevin and Mrs. Jana Maher
Ms. Vaibhav Mangrulkar
Ms. Kate Margolis and Mr. Joe Margolis
Mark E. & Barbara C. Vermilyen Charitable Gift Fund
Ms. Carmela and Mr. Anthony Marucci
Mr. Anthony Masherelli
Mrs. Mary Jane and Mr. James McCarthy
Mr. David and Mrs. Jessica McGuire
McKesson
McMahon Family Charitable Gift Fund

Mrs. Elizabeth and Mr. Christopher McReynolds
Dr. Sudhir Mehta
Ms. Monica Melancon
Mr. Greg Menarguez
Ms. Joelene Miller
Ms. Molly Minnear
Ms. Sabrina Model
Dr. Robert Mohr
Mr. Cliff W. Moodie
Ms. Vlasta Moravkova
Mr. Andrew Morris
Mr. Barry G. Moss
Ms. Alison Mount
Mr. John M. Mustion
NECA Services
Mrs. Maushumi Nerurkar and Mr. Milind Nerurkar
Network For Good
New Jersey Association of Realtors
Ms. Sandi Niccolai
Nisivoccia LLP
North Central Jersey Association of Realtors
Mr. Billy Orologio
O'Toole Scrivo
Mr. David and Mrs. Elizabeth Owens
Mr. and Mrs. Alan Painter
Mr. and Mrs. Richard G. Palla
Mr. Anthony and Mrs. Jennifer Papantonio
Mr. George Parente
Park Avenue Club
Ms. Swati Patel
Peapack-Gladstone Bank
Mr. Eric Pedersen
Mr. Felix Perez
PerformLine
Ms. Laurie Peter and Ms. Betsy Bernard
Ms. Laura Peterson
Mr. Michael Petrane
Ms. Annie Petrocelli
Ms. Jama Podell-Vitale
Presbyterian Church of Morris Plains
Presbyterian Church of Morristown
Mrs. Ann L. Probert
Prudential Foundation Matching Gifts
PSE&G
Ms. Michele Raber
Ms. Naveen Rao
Mr. William Richardson

Supporters (\$1,000+)

Mr. and Ms. Kenneth Robin
Mr. and Ms. Shawn C. Rogers
Mr. Guy and Mrs. Laura Russell
Rutgers
Ruth J. Zowader and Philip M. Anderson Fund
RxLogix Corporation
Mr. Tom Sabol
Saddle River Inn
Saiber LLC
Mr. and Mrs. Barry Schub
Mr. Jeffrey Schwartz
Ms. Donna Schwartz
Dr. and Mrs. Christopher W. Sciales
Ms. Shar Seshadri
Mr. Joseph and Mrs. Inga Shalhoub
Ms. Anna Simansky
Mr. Jeffrey Simon and Mrs. Madeline Simon
Mrs. Anne Singleton
Ms. Carolyn Slaski
Mr. Anthony Slimowicz and Mrs. Lynn Johnston
Mr. and Ms. Billy Smith
Mr. David Smith
Sons of Italy - Local 2561
Sparta United Methodist Church
St. Patrick's Day Parade Of Morris County, Inc.
St. Peter's Episcopal Church
Dr. Heather Stewart-Pyne
Swiftwater Foundation, Inc.
Ms. Colleen Szuch
Mrs. Ann Talcott
The Andrews Charitable Fund
The Chatham United Methodist Church
The Claudia E. Mott Fund
The Edward C. and Edith B. Parker Charitable Fund
The Frelinghuysen Foundation

The Hartford Philanthropic Fund
The John Bickford Foundation
The Mane House
The Ruth Silverman-Rosenbloom &
Victor H Rosenbloom
The Ryan Family Foundation
The Schreiber Bogan Fund
The Siegfried Group
The Singh Foundation
The Smith-Caroscio Family Fund
The Tiger Baron Foundation, Inc.
The WAWA Foundation
Mr. and Mrs. Frederick W. Thoeni
Thomas E. Reilly, Jr and Elizabeth A. Palmer Gift Fund
Ms. Kathleen Tierney
Ms. Patricia Titone
Mr. Jim E. Torney
Town Title Agency
Mr. Daniel Tozzi
Travelers Bond and Specialty Insurance
Mr. Juan Trillo
Tugentman Family Fund
Vella Family Fund
Verizon Foundation
Verizon PAC Match
Ms. Dawn M. Verrinder-Cormier
Mr. Stephen Verrone
Walsh Family Fund of CFNJ
Dr. Mirian Weir and Mr. Michael Weir
Ms. Claudine Wolk
Women's Association of Essex Fells Country Club
Ms. Linda Woodfield-Stern
WTEA
Ms. Christine Zeikel

Contributors (\$500+)

Academy of Saint Elizabeth
Ace-Braemer Fund
Ms. Sandra Addo
Ms. Amy Allegretti
Dr. Marilyn Althoff
Amazon Smiles Foundation
Ms. Alyson Andrus
Ms. Barbara Anelle
Anonymous
Artistic Academy
AT&T
Mr. Jeffrey and Mrs. Mary Bagley
Bank of America Foundation
Mr. and Mrs. John J. Barilla
Ms. Veronica Barros Berreto
Ms. Judith Bayard
Mrs. Peggy Bergh
Ms. Colleen Bewalder
Mr. and Ms. Stephen Borsy
Ms. Noel Briordy
Mr. Donald Bucciarelli
Mrs. Britt Byers
Ms. Jeanette Calandra
Ms. Caitlin Carney
Ms. Jamie Carpenter
Carver Delaney Families Foundation, Inc.
Ms. Janette Cascaes Desouza
Ms. Gabby Cestone
Ms. Patricia Chambers
CIGNA
Ms. Dana Cimera
Mr. Robert and Mrs. Janet Cole
Ms. Alexandra Coleman
Ms. Anna Colleml
Ms. Nicole Colleml
Ms. Cynthia Conway Kitchen
Ms. Brianna Costa
Mr. John Cummins
Ms. Colleen Cunningham
Mr. and Mrs. Thomas Curnin
Mr. Denis Daly
Mr. Andrew Daoud
Mr. James DArecca
Mr. John DeAmorin
Mr. Mark Del Mauro
Ms. Shacara and Mr. Jorge Delgado

Mr. Phil DeMarc
Ms. Danica Dilligard and Mr. Milton Dilligard
Mr. Daniel Dinan
Mr. Joseph Dobronyi
Ms. C Lynn Dolan
Mr. Bret Dooley
Douglas and Catherine Brown Fund
Ms. Cecilia T. Dunkle
The Honorable Aura Dunn
Mr. Patrick Durbin
Ms. Beth Elenwune
Essendant Charitable Foundation
Fashano Family Gift Fund
Ms. Maria Fehling
First Presbyterian Church of Rockaway
Mr. Martin Foley
Ms. Rebekah Forlenza
Mr. Peter Freer
The Honorable Rodney P. Frelinghuysen
Dr. and Mrs. Vincent Frey
Frey Family Charitable Fund
Ms. Laura Frost
GAF
Ms. Charlene Galanek
Mr. Richard Gebig
Ms. Maryella Gockel
Goldman, Sachs & Company
Ms. Gina Goodheart
Google
Ms. Julie and Mr. Matt Green
Mr. Len Guzzino
Dr. and Mrs. Douglas Hager
Mr. and Mrs. Clifford Hallberg
Hanover Rotary Club
Mr. Bruce Haskell
Mr. Tong He
Mr. Stephen and Mrs. Laura Heil
Mrs. Sunita Holzer
Hope Church
Ms. Cadi Houck
Mr. Thomas Iannacone
Inglesino Webster Wyciskala & Taylor LLC
IT Radix
Mr. John Izzett
Mr. Eric James
Mr. Max Janoff

Contributors (\$500+)

Jeri and Matt Frankel Charitable Fund
Mr. Sid and Mrs. Martha Jones
JP Morgan Chase Foundation
Mr. Michael Kacsmar
Mr. Ravind Karamsingh
Ms. Rippi Karda
Mr. Andrew Keating
Ms. Pam Kelleher
Mr. John P. Kennedy Jr.
Ms. Essra Kibler
Kinney Lisovicz Reilly & Wolff PC
Ms. Angela J. Klein
Mr. John C. Klug
Mr. Jeffrey Knight
Mr. and Ms. Robert Kolakowski
Ms. Leslie Kordonsky
Ms. Aru Kulkarni and Mr. Amol Kulkarni
Ms. Michelle Lamberta
Ms. Amy Larosa
Ms. Sheryl A. Lee
Ms. Heather Leef
Mr. William Lenhart
Mr. and Mrs. Abel E. Leon
Ms. Melissa Leonard
Liberty Mutual
Mr. Chanpen K. Maher
Ms. Ronita Mathias
Ms. Keira McDonough
Ms. Kimberly A. Meola
Ms. Marie and Mr. James Messina
Ms. Courtney Mezinis
Mr. Patryk Mielnicki
Ms. Claire Mindo
Mr. Kyle Moffatt
Ms. Rebecca Moody
Morris Knolls Booster Club
Morris Plains Rotary
Ms. Vanessa Mulligan
Ms. Lori Musmanno
Next Generation Training Center

Mr. and Mrs. Robert J. Noelke
Nolan Family Charitable Fund
Mr. Tom Nugent
Mr. Jonathan Odom
Ms. Patricia O'Rourke
Ms. Heather Ostrowe
Mr. David Parker and Mrs. Chelsea Parker
Mr. Chrs Paul
Ms. Diane Pennacchio
Mr. Chris Pierce
Pivot 46 LLC
Quintairos, Prieto, Wood & Boyer
Mr. Michael and Mrs. Virginia Ranger
Riker Danzig LLP
Ms. Debi Riska
Mr. Manuel Rivera
Mr. Logan Rizzo
Ms. Dawn Robertson
Ms. Laura Robinette
Mr. Matt Robinson
Rockaway Township Chapter of UNICO
Mr. Carmine Romano
Ms. Anna Rooney
Mr. Robert Sacks
Mr. David and Ms. Megan Sager
Samsung
Samsung Electronics North America
Ms. Maria Savettiere
Mr. William Schieffer
Ms. Barbara Schiffman
Ms. Lori Scrudato
Ms. Deborah and Mr. Charles Seminerio
Mr. Aaron Semler
Ms. Allison Shearman
Mr. and Ms. Robert Sherman
SKC & Co.
Mr. Dalton Smart
Ms. Amy Smith
Ms. Noelle Smith
Mr. Matthew Snitkey

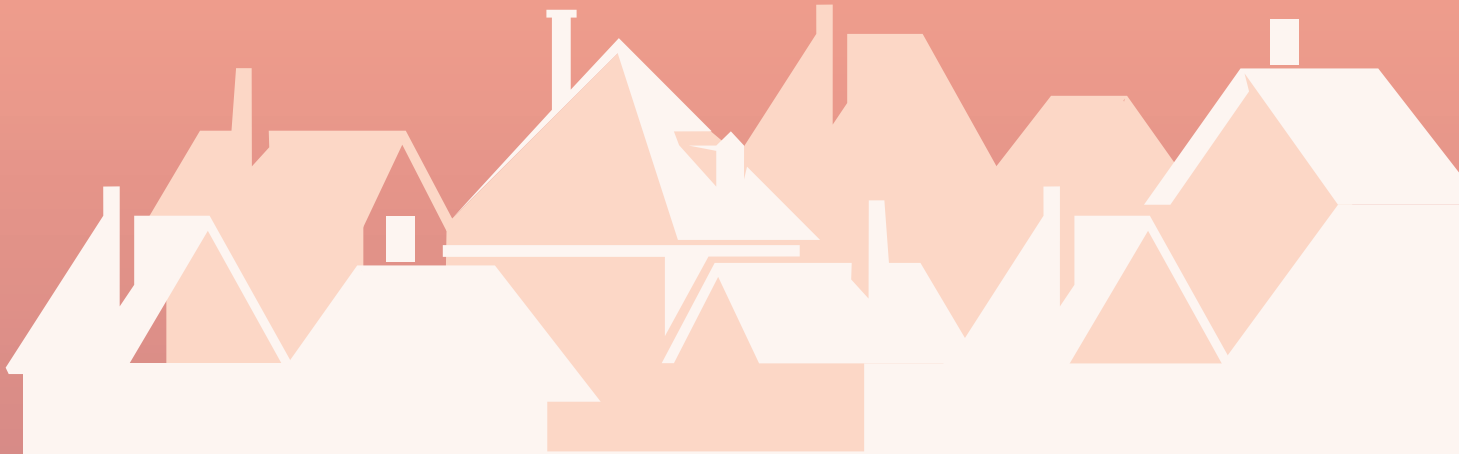
Mr. Peters Suh
Mr. Michael Sweeney
Ms. Paola Taddeo
Mr. and Ms. Robert B. Tafaro
The Bank of New York Mellon Community Partnership
The Christopher Mayer & Gail Crofoot Charitable Fund
The Dee/Stone Family Fund
The H.A. Heller Foundation, Inc.
The Idrees and Patricia E. Ahmad Foundation
The Lonon Living Trust
The Parker Foundation
The Stover Family 2017 Charitable Assurance Fund
Mr. Brian Torchen
Mr. and Ms. John Ubhaus
United Way of Greater Atlanta
United Way of Southwestern Pennsylvania

Van Duyne Gift Fund
Ms. Claudia Van Loo
Mr. Jeroen van Paassen
Mr. Dean and Mrs. Denise Vanech
Mr. Leon VanHorn
Mr. David Verderami
Warren L. and Lorraine L. Passmore Charitable Gift Fund
Ms. Nancy Washington
West Morris Regional H.S. District
Mr. David Wiessel
Ms. Jennifer Williams
Ms. Lynn Williams
Ms. April Wirtz
Mr. and Mrs. James Wynn
Ms. Karen Young
Ms. Cynthia L. Zey

Friends (\$250+)

Mrs. Catherine and Graham Ackerman
Ms. Lynne Acla
Anonymous
Ms. Gina Archer
Mr. Joseph Atkinson
Ms. Lisa Baker
Ms. Robin Ballard
Mr. Neil Banbury
Barber Law, LLC
Mr. Steven Bedell
Mrs. Deborah Belfatto and Mr. Joe Belfatto
Ms. Heather Bell
Ms. Stephanie Berk
Bishop McLaughlin Council 3495
Mr. John Blumers
Ms. Nora Bohl
Ms. Kate Bondy
Mr. Alex Borgo
Mr. Gary Botwinick and Mrs. Susie Botwinick
Ms. Jo Brower
Ms. Kimberly Brownlie
Ms. Cristina Buendia
Ms. Kristina Bunch
Ms. Megan Bury
Ms. Kristin Bush
Ms. Desiree Bushman
Ms. Jennifer Cardone

Ms. Robin Carroll-Mann
Mr. and Ms. Gene Charney
Ms. Dora Cioce
Ms. Kathleen E. Clark
Mr. William Copeland
Ms. Mallory and Mr. Wayne Copeland
Copeland Middle School
Ms. Beth Correa
Mr. Stefano Crema and Mrs. Jeryl Crema
Ms. Tiffany Crosby
Ms. Lisa Cupelli
Mr. Andrew Dachisen
Ms. Natalie Damian
Ms. Ruth C. Davis
Ms. Erica DeMarco
Ms. Vickie DiCianni
Mr. Stephen and Mrs. Elizabeth Dilts
Ms. Kristen Dugan
Ms. Courtney Durling
East Windsor Vol Fire Co Number 1 Inc
Ms. Christine Edwards
Mr. Todd Egan
Ms. Kay Egawa
Equinix, Inc.
Mr. Scott J. Feely
Ms. Cleo Filis
Ms. Mary Grace Finn



Friends (\$250+)

Ms. Lorraine First
Ms. Ursuline Foley
Four Star Fit LLC
Ms. Cheryl Fried
Mr. Jeffrey Friedman
Mr. Jeffrey Gabriel
Mr. Thomas Gaidimas
Ms. Kathleen Gentile
Ms. AnnMarie Gentilesco
GFWC Woman's Club of the Denville-Rockaway Area
Mr. Michael Giordano
Ms. Alexis Goldberger
Ms. Ann Marie Graniere
Mr. Douglas Grant
Ms. Susanna J. Gray
Mr. David Green
Mr. H. John Greeniaus and Mrs. Sheridan Greeniaus
Mr. Thomas Griffith
Ms. Jean Guatta
Ms. Mary Guatta
Ms. Judy K. Hahn
Mr. Vincent Halleran
Ms. Mary Ellen Hancock
Ms. Whitney Hathaway
Ms. Stephanie Hayutin
Mr. Matthew Hefner
Mr. Joshua Herron
Ms. Carrie Hughes
Mr. and Ms. Michael J. Humienny
Ms. Katherine Hunter
Ms. Courtney Inge
Ms. Renee and Dr. Dale Jacobs
Ms. Bettie Jarvis
Jean Edwards Cellars LLC
Mr. Michael Jeanette
Mr. Thomas A. Jess
Mr. Alan and Ms. Jill Johnson

Mr. Eric Johnson
Mrs. Arlene and Mr. Keith Johnson
Mr. Thomas and Mrs. Penny Jones
Ms. Chanel Jones
Ms. Dianne and Mr. Thomas Jones
Joseph P. and Mary Lynn Hehl Charitable Fund
Ms. Elizabeth Anne Keat
Mr. Walter and Mrs. Debbie Kneis
Ms. Bibi Knoetze
Ms. Kara Korn
Mr. Steve and Mrs. Dorothy Kroll
Mr. Andrew Kuhn
Mr. William Kuhne
Ms. Elizabeth Lecky
Mrs. Carol and Mr. Charles Leiwant
Ms. Barbara G. Levinson
Ms. Alison Little
Ms. Elizabeth Luckhurst
Ms. Liz Luckhurst
Dr. William Lupatkin and Dr. Julie Lupatkin
Mr. and Mrs. Michael MacMillan
Mr. Rick and Mrs. Maria Mangino
Ms. Stephanie Manuel
Ms. Laura Marcy
MarketSmith Inc.
Ms. Jacqueline Marrone
Mr. Thomas and Mrs. Christine Maxwell
Mr. Edward and Mrs. Mary Jane McGuire
Mr. Hector Mislavsky and Ms. Judy Martinez
Ms. Joanne Morreale
Mr. James Morrison
Morristown Unitarian Fellowship
Mr. Justin Moss
Mr. Chris Mutter
Ms. Elizabeth Nader
Ms. Susan Nagel
Ms. Debbie Nappi

Newman Orthodontics
Ms. Nicole Nicholson
Mr. and Mrs. Roy Nuzzo
Ogden Memorial Presbyterian Church
Mr. Arnold M. Olshan
Mr. Jose O'Neill
Ms. Kelly Paone
Mr. Christopher Parisi
Parrillo Luxury Travel
Ms. Mary Lou Pastore
Ms. Suleen Patel
The Honorable Joseph Pennacchio
Ms. Camille Pesce
Picatinny Arsenal
PNY Technologies, Inc.
Postpartum Health & Harmony
Principal Financial Group
Ms. Chandrakanti Ramesh Babu
Mr. Daniel Regan
Mrs. Shelby Rhodes
Mr. Kenneth Richardson
Ms. Maureen Robbins
Robert Half International Inc.
Ms. M.C. Robinson
Mr. Mark Rocca
Ms. Olga Rosa Jon
Ms. Patrice Rossettie
Mr. Christopher Rotio
Mr. Brad Schulte
Ms. Jan Seele
Ms. Leslie Segal
Mr. Paul Selver and Ms. Ellen Selver
Ms. Jennifer Service
Mr. Scott Shappell
Mr. Romesh Sharif
Mr. Mark Shearman and Ms. Linda Bohrer
Ms. Sianna Simon
Ms. Deshi Singh

Mr. Shawn Snow
Mr. Michael Soriano
Mr. Rich Sosanie
Mr. Edward Sot
Mr. Ryan Spencer
Stirling Tavern
Ms. Christina Sudler
Ms. Doreen Sullivan
Superhero Events LLC
Ms. Alicia Swift
Ms. Rachel Tamburri
Mr. Thomas Tapen
Ms. Mindy Tarantino
TE Connectivity
The Gregory and Wendy Supron Charitable Fund
The William and Joan Barras-DeVizio Donor
Advised Fund
Mr. James and Mrs. Cynthia Thieringer
Mrs. Elizabeth Thompson and Mr. Grant Thompson
Ms. Natalie Thompson
Thrivent
Mr. Joseph Topper
Mr. and Ms. Timothy Tracy
Tri-County Orthopaedics
Twins & Triplets Mothers
Mr. Richard Ugino
Mr. Joshua Ungerleider
Ms. Anand Upadhye
Ms. Christine Van Wagoner
Ms. Sharon Varnelas
Ms. Marie-Therese Vaz
Mr. Patrick Vowles
Walter Bauman Jewelers
Mr. Jerry Weikel
Ms. Diane Weiss
Mrs. Patricia Weissner
Mr. George and Mrs. Sharon Wiener
Mr. John Wooters

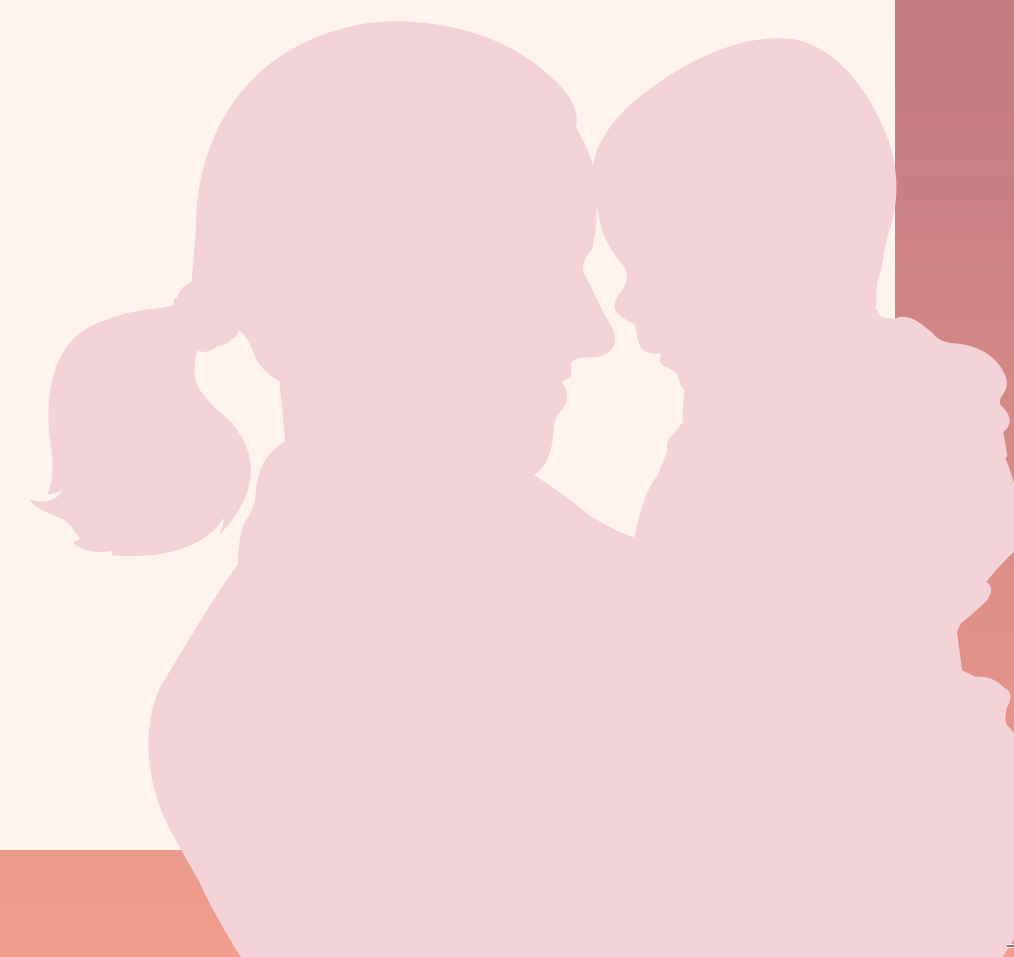
Individuals (\$100+)

ABC Growing Tree, LLC
Mr. Alan Paul and Ms. Rebecca Bumenstein
Mr. Todd and Mrs. M. Theresa Alboum
Mr. and Mrs. John W. Alexander
Ms. Wendy Alley
Ms. Usha Ananth
Anonymous

Mrs. Christine Antal
Ms. Sarah Apicella
Mr. Tom Arnost
Mr. Anthony and Mrs. Jane Asch
Mr. Bob Attinello
Ms. Ariane Auster
Mr. Godfred Baafi

Individuals (\$100+)

Mr. Matt Baer	Ms. Lauren Carmody	Ms. Lauren Dieterich	Ms. Chiara Furfaro
Ms. Marta Bailey	Ms. Eileen Cashman-Jermak	Mr. Paul diFrancescantonio	Ms. Deana Furino
Ms. Stephanie Bair	Ms. Cynthia Casiano	Dinner by Dee LLC	Ms. Linda Gaden
Mr. Glenn Bakos	Ms. Stephanie Castet-Bellocq	Ms. Jen Dolan	Ms. Andrea Gagliardi
Mr. Alexander Ballack	Ms. Yolanda Castro-Wojacek	Ms. Mary Ellen Dolan	Mr. and Mrs. Nicholas Gakos
Mr. Ray Bariso	Ms. Suzanne Cekoric	Mr. Jack F. Donahue	Ms. Stephanie Geannakopoulos
Ms. Rameena Barksdal	Mr. John Charters	Ms. Nancy Donatiello	Ms. Karin Gehrmann
Ms. Lori Barnes	Ms. Kathleen E. Chin	Ms. Barbara Donegan	Ms. Melissa Geling
Mr. John Barresi	Ms. Andreas Chrysostomou	Ms. Mary Donelik	Ms. Nancy and Mr. Peter Gentile
Mr. Tito Bastianelli	Ms. Jennifer Ciccarella	Ms. Colleen Dougherty	Mr. Michael Gephart
Mr. Scott R. Bechtloff	Ms. Hannah and Ms. Meghan Ciullo	Mr. James Dowd	Mr. Christopher and Mrs. Laurie Gerard
Ms. Catherine Beers	Ms. Caron Claes	Ms. Catherine Dowling	Mr. Edward Giannattasio
Ms. Catherine Behre	Mr. Brian Cleary	Ms. Melinda Duensing	Ms. Pamela Ellis Gilly
Ms. Jacqueline Behringer	Ms. Maria Clemente	Ms. Keary Dunn	Mr. Joseph Giordano
Mr. Timothy Belanger	Mr. Paul Cocco	Ms. Kristin Edwards	Givinga Foundation, Inc
Ms. Lisa Bell	Ms. Diane M. Coffman	Mr. Mike Efrus	Ms. Allison Gogarty
Ms. Rachel Benfante	Ms. Jennifer Colapietro	Ms. Regina Egea	Ms. Karen Goldman
Ms. Kaden Bernstein	Colgate Palmolive	Ms. Sarah Elliott	Ms. Donna Goldstein
Moreen Beshara Hazlehurst	Comcast	Ms. Nicole Emmerich	Ms. Kenia Gomez
Ms. Judith K. Black	Ms. Catherine Considine	Ms. Laura Engelhardt	Ms. Lisa Gonzalo
Mr. David and Mrs. Theresa Blackwell	Ms. Toni Corban	Mr. Hasan Erkan	Ms. Lynn Graham
Ms. Luca Bonardi	Ms. Michelle Cortazzo	Mr. Titi Eshete	Ms. Laura Greenwald and Mr. David Strom
Boonton Womens Club	Mr. Shawn Cortese	Mr. Rodolfo Espinosa	Ms. Terri Grenot
Ms. Krista Bourne	Mr. Cole R. Couture	Ms. Stella Esposito	Mr. Harold Grotevant
Ms. Diane Boyd	Ms. Sylvia Couvertier	Mr. Dane Evans	Ms. Denisse Grullon
Ms. Jean Bozarth	Ms. Katherine Coyne	Mr. James Evans	Ms. Emanuela Gubitosa
Mr. Andy Brady	Ms. Maureen Craven	Ms. Jessica Everett	
Ms. Takoya Brannon	Mr. Tom Cunningham	Eye Associates of North Jersey, P.A.	
Ms. Michelle Braun	Ms. Erin Curran	FactSet	
Ms. Valerie Breithoe	Mr. and Mrs. Timothy Cutler	Mr. Matt Fallivene	
Ms. Christine Brembs	Ms. Robyn D' Elia	Mr. Will Farry	
Ms. Ginger Brennan	Ms. Maahir Dadlani	Mr. Joseph and Mrs. Maureen Fazio	
Ms. Gale Britton	Ms. Cathleen Dagata	Mr. Brian Feder	
Ms. Judith Brophy	Mr. Matthew Daly	Mr. Michael Fendrick	
Ms. Elizabeth Brown	Mr. Jim Damiano	Ms. Desiree Feoranz	
Ms. Lisa Brown-Freeman	Ms. Marie Damiano	Mr. Vincent Figueroa	
Mr. Pat Brueggman	Mr. Feizhen Dang	Ms. Ellen Fine	
Ms. Stephanie Brumby	Ms. Krishna Dave	Finlay Extracts & Ingredients USA, INC.	
Ms. Karen B. Brunner	Ms. Ashley Davidow	Ms. Ashley Finneran	
Mr. Robert Bruno	Ms. Anna-Jane De Grossi	Ms. Denise Fiore	
Ms. Lindsey Buglino	Ms. Carolyn DeCastro	Ms. Geri Firth	
Ms. Dorothee Burchartz	Mr. Frank and Mr. Bobo DeLaney	Mr. Jeff Fisher	
Ms. Cui Cai	Ms. Nathalie Dennis	Ms. Felice Flitt	
Ms. Morgan Callahan	Denville Community Church-United Methodist	Mr. Manuel Fonseca	
Ms. Kathleen M. Cammarata	Mr. Christopher and Mrs. Patricia DePhillips	Ms. Laney Foultz	
Mrs. Judith Cannon	Ms. Punita Desai	Ms. Lori Fraticelli	
Ms. Linda Caponegro	Ms. Roberta DeSimone	Ms. Terri Freedman	
Mrs. Patricia Cardinale	Ms. Jeananne Devaney	Mr. Kevin French	
Ms. Gail Carlson	Ms. Debbie DeVito	Mr. Jonathan Freve	
Ms. Leslie Carlucci	Ms. Fiorella Diaz	Mr. Donald Fritchman	



Individuals (\$100+)

Ms. Cecile Guegan
Mr. Lance Haldeman
Mrs. Julia Hallberg
Ms. Susan Jill Halpern
Ms. Juli Harpell-Elam
Mr. Richard and Mrs. Jacquelyn Hartley
Mr. Nick Hartoularos
Ms. Mary Jane Hastings
Ms. Tara Hastings
Ms. Kathleen G. Havens
Mr. Thomas and Ms. Valerie Haverty
Mr. John Hayes
Mr. Gregg Hayutin
Ms. Barbara Hayutin
Ms. Colette Hazen
Ms. Sheri Hecht Leonard
Mrs. Pamela Helmer
Mr. Francis and Mrs. Florance Henry
Mrs. Joyce C. Henry
Mr. Steve W. Herrmann
Mr. Michael Heyert
Ms. Joanne Heyert
Mr. David Hinckley and Ms. Francis Wood
Ms. Theresa Hinton
Ms. Jane A. Hodge
Ms. Marcy Hoffer
Mrs. Stephanie Loel Holloway and Mr. Peter Holloway
Mr. Gerald Horn
Mr. Patrick Horn
Ms. Elizabeth Horn
Ms. Jenny Houghton
Mr. Francis Hubbard
Mr. Bryan Huff
Mr. and Mrs. Mamoun Hussein
Ms. Theresa Hyslop
Mrs. Arlene J. Inglis
Ms. Maria Ionfrida
Ms. Mecca-Amirah Jackson
Ms. Michelle Jaross
Ms. Shani Jarvis
Ms. Marie Jean-Philippe
Ms. Jacqueline Jefferson
Ms. Regina Johnson
Mr. Patrick and Mrs. Christina Jonas
Ms. Felicia Jones
JSMOM
Ms. Stacey Kalambakas
Ms. Michal Kanza-Levi
Mr. Pallav Kapoor
Ms. Susan Karlowitz

Mr. Andrew Keating
Ms. Loralyn Keating
Ms. Susan Kelemen
Ms. Jane Kelly
Ms. Ann L. Kelsey
Ms. Kayla Kennedy
Ms. Susan Kennedy
Ms. Helena Kernier
Ms. Melissa Kiefer
Mr. Chris King
Mr. Scott D. King
Ms. Barbara Kinnecom
Mr. Kyle Kinowski
Ms. Claire Kipnis
Ms. Kathleen Kirk
Ms. Barbara Klausner
Ms. Carol Klimek
Mr. James P. Knight
Ms. Kristen Knight
Ms. Jennifer Kodat
Ms. Anastasios Konidaris
Ms. Randy Kornberg
Ms. Rachel Korsky
Ms. Michalina Koscienc-Smith
Mr. Thomas Kovell
Mr. James Krause
Ms. Anne Kroon
Kubale Family Foundation
Ms. Krishna Kumar and Ms. Manisha Chilka
Mrs. Jane Kurek and Mr. Michael Kurek
Mr. Tony Labozzetta
Ms. Leigh Lachman
Laddey Clark & Ryan
Ms. Deborah Laeyt
Ms. Maria Lagattuta
Mrs. Linda Laidlaw
Mr. Rano Lalli
Ms. Shelley Lamberta
Mr. Daniel and Mrs. Rose Landis
Ms. Bridget Lang
Mr. Alexander Langlois
Mr. Frederick and Mrs. Susan Lappin
Ms. Nicole LaSpina
Mr. Stuart Lasser and Ms. Tracey Ibsen
Ms. Joann LaVorgna and Ms. Lois Palio
Ms. Y. Lee
Ms. Margaret Lenahan
Ms. Ebonee Lewis
Mr. Adam Lisman
Ms. Marjorie List

Mr. and Ms. Ronald Litchkowski
Ms. Laurie Litt
Ms. Judith Livant LPC, LCADC
Ms. Jennifer Lok
Ms. Rachel Lokken
Ms. Katherine Longmuir
Dr. and Mrs. Lawrence A. Lubow
Ms. Florencia Luce
Mr. Michael Lyons
Ms. Virginia M. Lytle
Ms. Megan Mabee
Ms. Kate Macatee
Mr. Thomas MacDonald
Ms. Stephanie Macejko
Mr. Sean Maffei
Mr. Valmir Magjuni
Mr. Mitesh Maheshwari
Ms. Jodelyn Malzberg
Ms. Diane Mammon
Mr. James and Mrs. Suzanne Mandala
Ms. Hayley Manger
Mrs. Cathleen M. Mann
Ms. Carol Marano
Mr. Romolo Marcucci
Mr. Nicholas Mariniello
Mr. Jean Marston
Ms. Mae Martella
Mr. Tony Martine
Mr. Antonio Martinez
Mr. Kyle Maryanski
Ms. Marlie Massena
Ms. Eileen G. Mathews
Ms. Desiree Maurin
Ms. Patricia Maxwell
Ms. Jenny Mayfield
Mrs. Deborah McCollough
Mr. Keith McCormick
Mr. B. Alan McDermott
Ms. Jennifer McDermott
Ms. Ida McGrath
Ms. Maryann McGrath
Mr. Daniel McGuire
Ms. Erin McKenna
Ms. Shannon McKenna
Ms. Trisha McKenzie
Mr. Laurence McMillan
Ms. Ellen McSherry
Mr. Robert Mecca
Mr. and Mrs. Daniel J. Meehan
Mr. David Menecola

Ms. Nicole Meneses
Ms. Mari Meriluoto
Ms. Sheri Merkel
Mr. Kenneth and Mrs. Lenore Mertz
Ms. Diane Metzler
Microsoft Giving Campaign
Mid Jersey Mothers of Multiples
Ms. Alison Miller
Ms. Monica Mindler
Ms. Larissa Minitelli
Mr. Travis Miskowitz
Ms. Jacklyn Miuccio
Ms. Kerry Mohan
Montville Reformed Church
Moody's Corporation
Mr. Christopher Moore
Mr. Eduardo Morales
Ms. Mallory Morales
Mr. Kevin Morency
Mr. Matthew Morgan
Mr. Matthew Morgan
Morris Hills Education Association
Morristown Cake Lady LLC
Ms. Kathy Moss
Dr. and Ms. Shamkant Mulgaonkar
Ms. Theresa D. Murphy
Mr. Eric Muse
Ms. Suzanne Mutz-Darwell
Ms. Indira Myers
Mr. Miguel Myhrer
Mr. Mike Myron
Mr. Jayabhushan Nallakannu
Ms. Lorraine Nardone
Mr. Anju Nayyar
Mr. Josh Needle
Mr. and Mrs. Robert Nelson
Ms. Lynn E. Nelson
Neuberger Berman
Mr. James Newman
Mr. Philip and Mrs. Genevieve Nicastro
Mr. Richard Noonan
Ms. Beth Norby
Ms. Deborah Nungester
Ms. Jovita Nwosu
Mr. Steve and Mrs. Laura O'Connor
Ms. Mary F. O'Connor
Mr. Jon and Mrs. Laura Olstein
Mr. James F. O'Neill
Ms. Lauren O'Neill
Ms. Tatiana Orozco

Individuals (\$100+)

Ms. Jessica Ortega
Mr. Jeffrey Osberg
Mrs. Karen and Mr. Chris Ostrander
Mr. Anthony Ostrowe
Mr. Thomas Ott
Ottoson Family
Ms. Lynne Pagano
Mrs. Maria & Paul and Mr. Paul Palamara
Ms. Kathleen Palumbo
Ms. Susan Panzarella
Mr. David Parkes
Mr. Robert Parochniak and Mrs. Angela Frost Parochniak
Ms. Lorraine Parodi
Ms. Joyce Pashel
Mr. Ashish Patel
Ms. Deepali Patel
Mr. Paul Pazniokas and Ms. Pam Mondelli
Ms. Jennifer Peffley
Mr. William Perry
Mr. Paul Peterson
Mr. Philip Petrillo
Pfizer Inc
Ms. Jennifer Phillips
Ms. Lisa Phillips
Ms. Elena Pienkowski
Ms. Judith H. Pierce
Ms. Linda Pierce
Ms. Stacey Plichta-Kellar
Ms. Lisa Poles
Ms. Charlene Polin
Ms. Cora Porter and Mr. Brian Porter
Ms. Sheila Posluszny-Meyers
Mr. Anthony and Mrs. Roseann Pospishil
Presbyterian Church of Hillside Park
Ms. Teresa Preskar
Mr. Chuck Privitera
Ms. Deborah Procaccio
Ms. Magdalena Prus
Purdue University Global, Inc.
Mr. Sukesh Puri
Mr. Jonathan and Ms. Bethany Rabinowitz
Ms. Javad Ramandi
Ms. Lena Raposo
Mr. Sumeet Rawla
Ms. Jacqueline Rees
Ms. Holly Reeves

Ms. Stephanie Reidinger
Ms. Athena P. Reilly
Mr. Frank Reiman
Ms. Erin Reineck
Ms. Lisa Resciniti
Mr. Matthew Rheingold
Richard Ughetta Charitable Fund
Mr. John and Mrs. Lisa Richards
Ridge Pools Inc
Ritacco Construction, Inc.
Ms. Deanna Rivers
Robert Blocker, CPA P.C.
Mr. Desmond and Mrs. Martha Robinson
Ms. Elizabeth Rodrigues
Ms. Lisa Rodriguez
Ms. Raissa Rojas
Mr. Raul Rosales
Mrs. Tamara and Mr. Douglas Roselius
Rosen Family Fund
Mr. Herbert Rottner
Ms. Susanta Kumar Routray
Roxbury Women’s Club
Mrs. Carol Rufener
Ms. Barbara Ruggiano
Ms. Michele Russomanno
Mr. Najat Saad
Ms. Kathleen Sabia-Cahill
Ms. Kathleen Saccente
Ms. Joan Salas
Salesforce
Mr. Jason Sammarco
Ms. Karen Santiago
Mr. Joseph Savino
Ms. Samantha Saydek
Mr. Leonard and Ms. Rosalie Scara
Ms. Kristen Schertz
Mr. Troy Schiadaresis
Mr. Michael Schneider
Mr. Frank Scuorzo
Mr. Brian Seidner
Ms. Sonita Shahani
Mr. Michael Shapiro
Mrs. Susan Shasa
Mr. and Ms. Ilya V. Shchukin
Ms. Jennifer Shenkman
Ms. Meirav Shliechkorn

Mr. Jim Sholly
Mr. Stephen Shyne and Mrs. Mary Ellen O’Connor Shyne
Dr. Donald and Dr. Lynn Siebert
Ms. Stacey Silipo
Mr. Mark Simon
Ms. Jackie Sims
Ms. Jacqueline Sims
Ms. Gail Sims Robinson
Mr. and Mrs. Dennis J. Skorewicz
Sky Charitable Foundation
Mr. Derek Smith
Ms. Danielle Smith
Mr. Brian Snead
Mr. David Solomon
Ms. Clara Son
Ms. Caitlyn Song
Ms. Toks Sotande-Peters
Ms. Eileen Specchio
Ms. Melissa Spencer
Ms. Danielle Stanzione
Mrs. Suzanne and Mr. Thomas Sullivan
Mr. and Mrs. Joseph Sunshine
Mrs. Wendy Supron
Ms. Sophia Talal
Ms. Karen Talarico
TataBob Charitable Foundation
Mr. Erik Taylor
TD Charitable Foundation
TeamPar Inc.
Mr. Anthony J. Tepedino
Mr. Jacob Terrell
Mr. Andrew Testa
The Fortis Agency, LLC
Ms. Jennifer Thibodaux
Ms. Joan M. Thuebel
Ms. Jennifer Todling
Mr. Jason Turchin
Mrs. Mindy Turner
Ms. Michelle Turner
Mr. Anthony Tuths
Mr. William and Mrs. Annette Tyler
Ms. Elizabeth Uptegrove
Ms. Gretel Uptegrove
Mr. Michael Uszacki
Mr. Rafael and Mrs. Patricia Valdes
Ms. Kaitlin Valenti
Ms. Tracy Valle
Valley National Bank
Mr. Steve Van Dinter
Ms. Lisa Vanderhoof
Mr. Silvio Vasconi
Ms. Ilona Veach

Ms. Michele Vega
Mr. Matthew Vicens
Mr. Vikrant Viniak
VISTA
Ms. Krystal Voelker
Ms. Ilana Volkov
Ms. Jamie von Ameln
Ms. Kristina Von Esch
Ms. Rachel Vorchheimer
Ms. Jennifer Vriens
Ms. Veronica Vros
Mr. Joel Wagner
Ms. Shawna Wagner
Mr. Chun Wah Chui
Ms. Sheryl Waldorf
Ms. Niti Walia
Mr. Andy Walker
Ms. Christina Walker
Mr. Thomas Walsh
Mr. Charles and Mrs. Li-Wua Wang
Mr. Huahui Wang
Ms. Donna Wantz
Ms. Rita Warfield
Mr. Matthew Warren
Ms. Bonnie Weiss
Mr. Steve Werner
Mr. Robert Weyman
Whippany Park High School
Mr. Bruce and Mrs. Jane Whitehead
The Honorable Christine Todd Whitman
Mr. Matthew Wikler
William C. Sweeney Family Fund
Mr. Scott Williams
Ms. Diane Williams
Ms. Shannon Williams
Mrs. Joyce Wilson
Ms. Kathryn Winston
Ms. Linda Wint
Mr. Michael Wirtz
Mr. David Wisotski
Ms. Laverne R. Wolfanger
Mr. Sheldon Wolitski
Ms. Fern Wolkin
Ms. Katherine Wu
Mr. Tobias Wuensch
Ms. Nancy Wynant
Ms. Nicole Wynne
Mr. Gang Yao
Mr. Larry Yusuf
Ms. Teri Zausmer-Manoni
Ms. Kathryn Zisa

**Are you interested
in learning more about
JBWS' mission to end
domestic violence?**

**Then consider joining our
newsletter and email list!**

In addition to receiving our monthly newsletter,
you'll get invitations to special events and be the
first to learn about all the happenings at JBWS.



Scan the QR code to sign up or
visit jbws.org/connect-with-us